

OneRX Portfolio

● V. 24.01

ONERX UAE

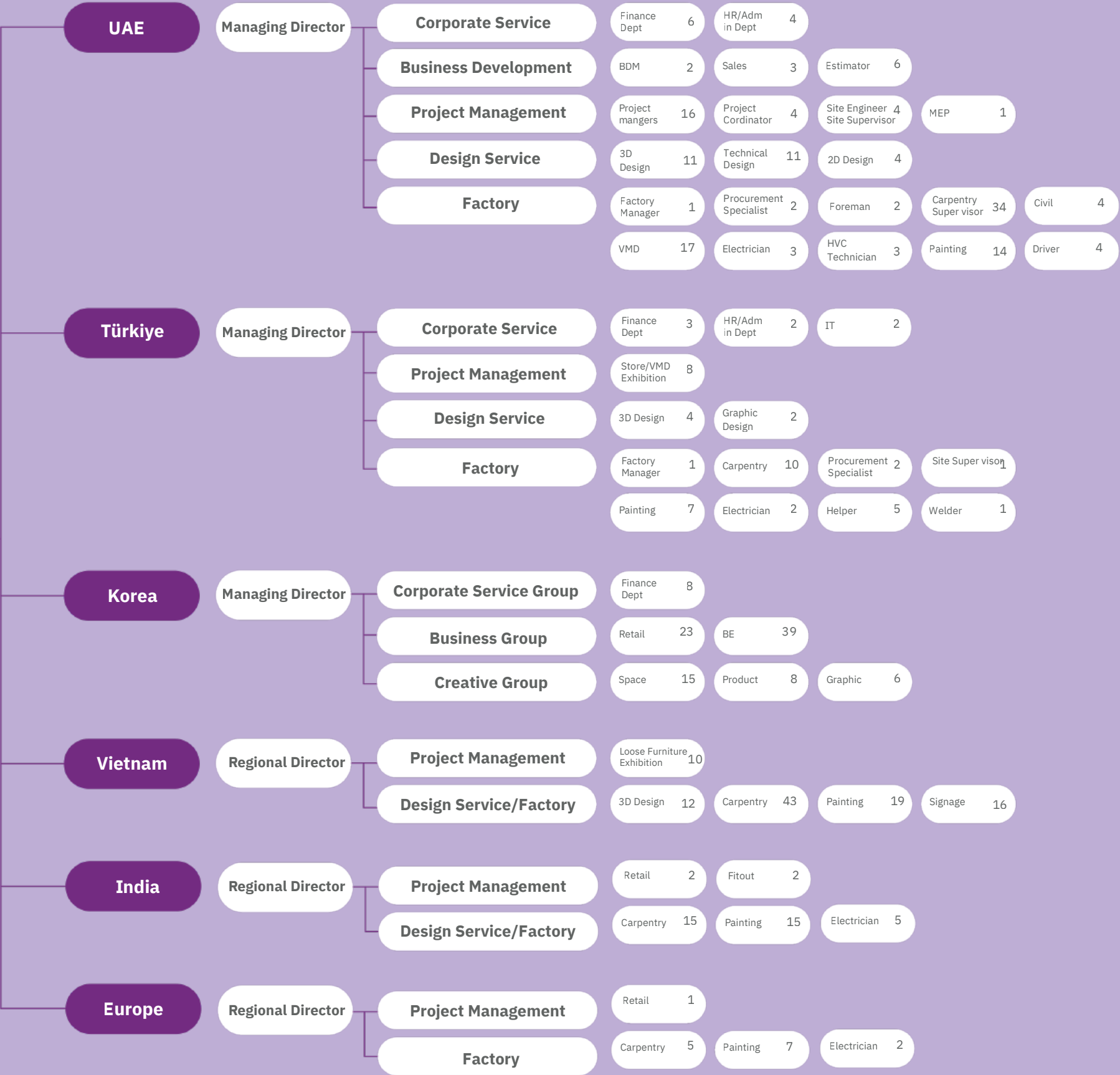
We Design Your
Brand Desire.



ABOUT US

Dubai Employees 156
Türkiye Employees 51
Korea Employees 93
Vietnam Employees 100
India Employees 39
Europe Employees 15

Total Staff 454



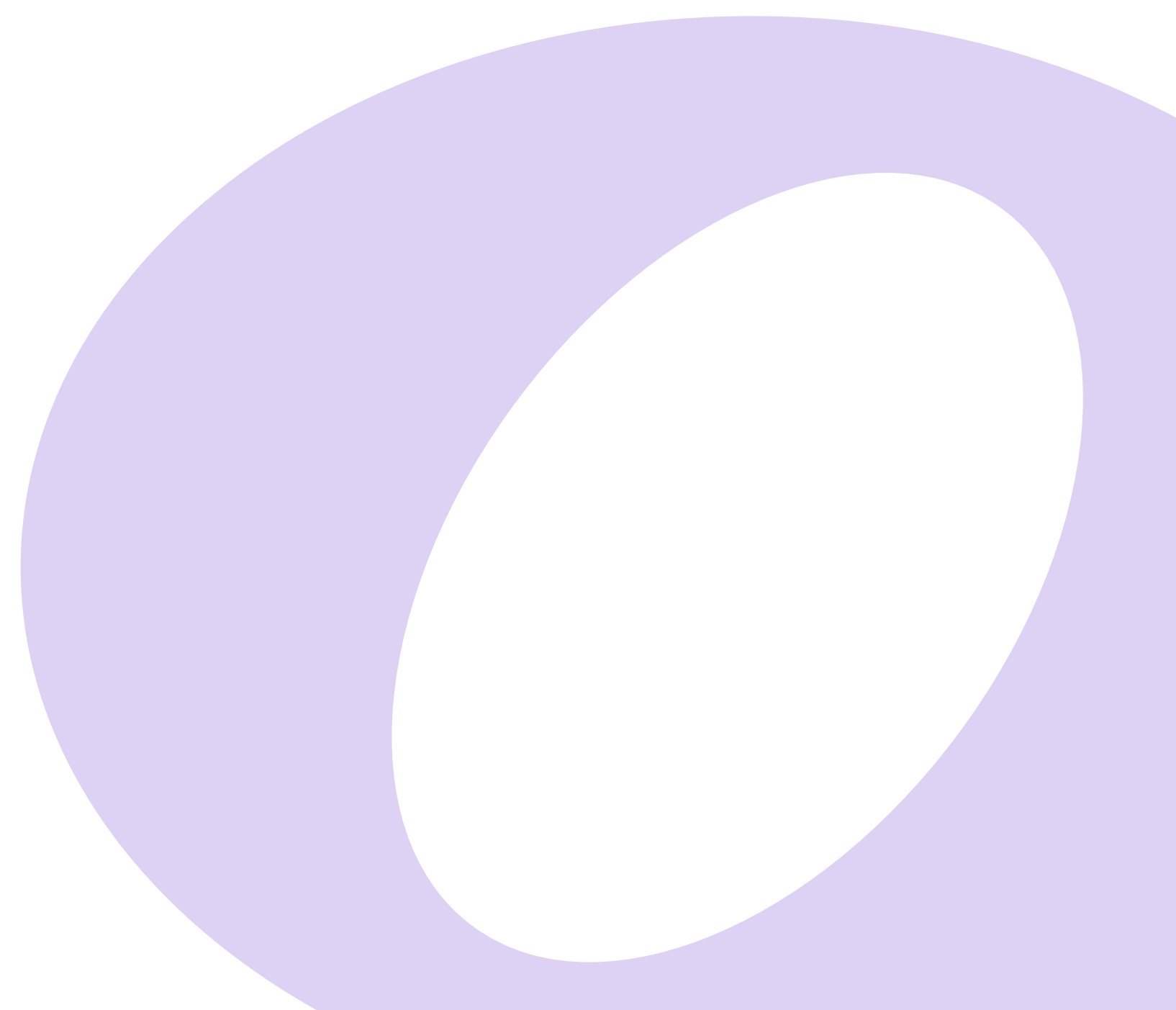
CONTENT

INTRODUCTION

- ABOUT US
- ONERX MILESTONE
- COMPANY OVERVIEW
- OUR PROCESS
- THE TEAM
- PRODUCTION FACILITIES
- LIST OF MACHINERIES

PROJECTS

- INTERIOR FIT-OUT
- EXHIBITIONS & EVENTS
- WAY FINDERS



01 Introduction

OneRx is a forward-thinking organization committed to delivering excellence through innovation, integrity, and customer-centric solutions. Since its inception, the company has consistently grown by staying ahead of industry trends and embracing technological advancements. We maintain a strong focus on quality, reliability, and long-term value for our clients, partners, and stakeholders. Our mission is to create impactful solutions that drive progress and set new standards in our field.

Our success is powered by a skilled team and a leadership group with deep industry expertise and strategic vision. We foster a culture of collaboration, accountability, and continuous improvement at every level of the organization. With clear values and a purpose-driven approach, we are committed to achieving sustainable growth and building lasting partnerships. As we move forward, we aim to lead with innovation, adaptability, and a strong sense of responsibility toward all our stakeholders.

About Us

ONERX is a global Interior & Fit-Out company headquartered in Dubai, specializing in high-end turnkey solutions and luxury retail projects.

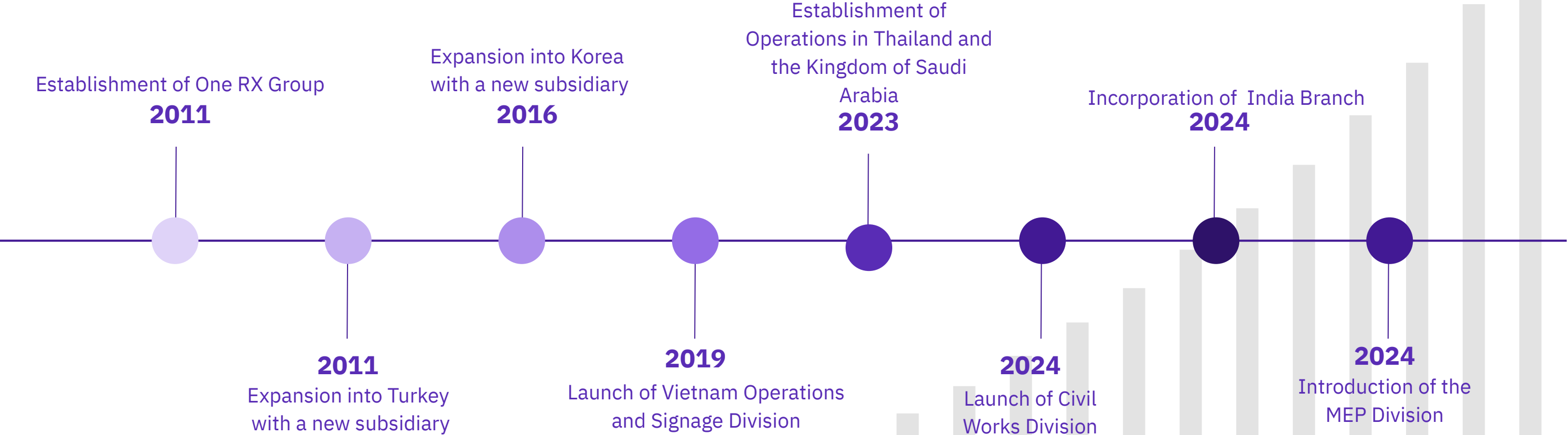
With expertise across corporate, retail, F&B, and hospitality sectors, we bring together creativity, precision, and functionality to deliver spaces that inspire. Backed by a skilled team of designers, project managers, and craftsmen, ONERX ensures seamless execution from concept to completion.

At ONERX, every project is driven by innovation, quality, and the vision to create spaces that truly make a difference.

We operate across multiple regions with branches in India, Vietnam, Korea, Turkey, Thailand, Slovakia, and the UAE (Headquarters, Dubai).



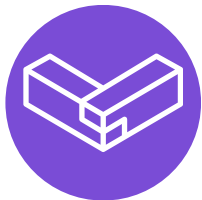
OneRx Milestone



COMPANY OVERVIEW



Over 1000 +
Projects



CIVIL DIVISION



MEP DIVISION



JOINERY,METAL
& GLASS



Over 1.5 Million
sq.ft. of completed projects



Over 15+ years
of experience



25%
year on year growth
rate



QUALITY & HSE
Certifications

Design Build

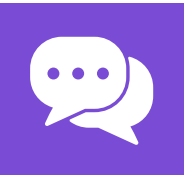
OneRx is your partner in taking projects from concept to completion. Our expert design and build services ensure that every aspect of a brand’s vision is realized with precision and quality. From structural design to execution, we oversee the entire process to deliver a finished product that exceeds expectations.

Project management

At OneRx, our Project Management services ensure every stage of your project runs seamlessly—from planning to handover. With a focus on efficiency, transparency, and cost control, we coordinate all stakeholders, manage timelines, and mitigate risks to keep projects on track. Our dedicated approach guarantees smooth execution and a final outcome that reflects both your vision and our commitment to excellence.

OUR PROCESS

Our process is structured to ensure clarity, efficiency, and creative alignment at every stage



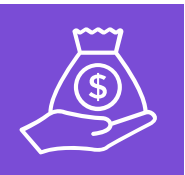
Consultation

Understand your space, needs, and vision



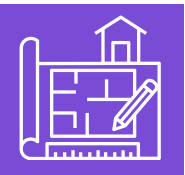
Concept Development

Mood boards, 3D renders, and layout proposals



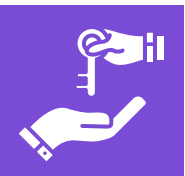
Material & Budget Finalization

Practical choices that match your goals



Fit-out Execution

Skilled implementation, on-site supervision



Handover

Final quality checks and on-time delivery

THE
MANAGEMENT
TEAM



Taesang Lim
CEO



Kyuchang Oh
CFO



Avil Pinto
Operational Head

BUSINESS
DEVELOPMENT
TEAM



Nithin Jose



Yokesh Neelagandan



Qamar Zaman



Jenifer



PRODUCTION FACILITIES

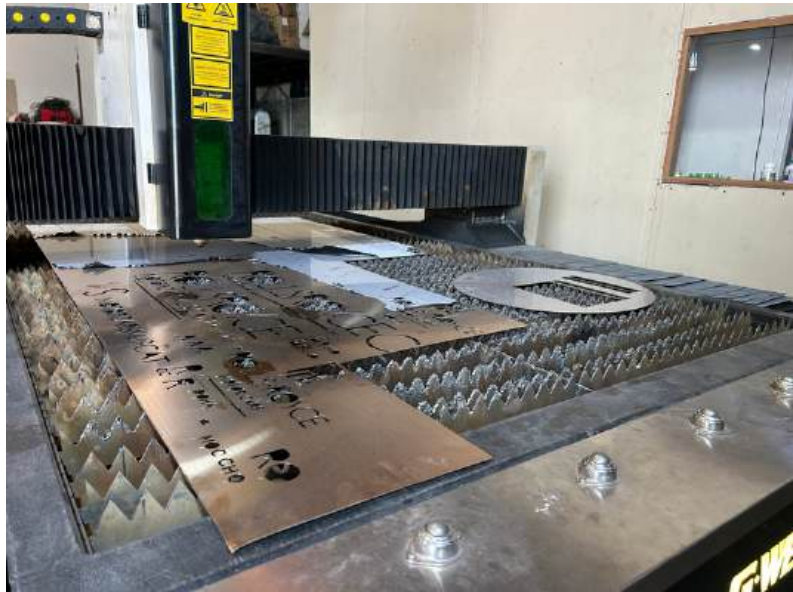
Dubai (3,100sqm)
Türkiye (5,000sqm) | Thailand (1,700sqm) | Vietnam (11,000sqm)





PRODUCTION FACILITIES

Dubai (3,100sqm)



MACHINERIES

- Fork Lift
- Circular SAW 400-WS cutting machine with dust bag
- Computerized Numerical Control (CNC) Machine
- Needle Lock Stitch Machine
- Centauro Band Saw SP800 three phase 5.5kw
- Casati Single Knife Veneer cutting machine
- SCM Nova SI 400 with Tilting Blade Circular Saws
- CNC ROUTER MACHINE 5.5 KW S1000 MODEL
- LM-E150-SF LASER MACHINER WITH 1326 BED AND 150W
- SIGNAGE MOLD ASSET IN VIETNAM
- Panel Saw 7.5 HP 1 HP - 3 Phase model Table
- Superior Tig 322 AC/DC-HF/LIFT
- E-21 Controller and sharing blade
- Hydraulic Shering machine
- E-21 Controller with punch and die tooling set
- Hydraulic Press Brake
- Groove Cutter DP and installation
- Superior Tig 322 AC/DC-HF/LIFT 270amps,3ph Telwin
- Power roller and drilling and milling machine benc
- Roland LEF 2-300 Printer + VKIT
- Laser Machine - Printing
- REFRIGERATION AIR DRYER
- AUTOMATIC VACCUM MEMBRANE MACHINE
- FP202-FLAME POLISHER 1000W
- FP202-Flame Polisher 1000W
- 130W Laser Tube
- Metal band saw-Model BS-712N
- Polishing machine 3HP_Pedestial Polisher
- ITAL Hydraulic Hot press 3000 X 1300-2 Day 90 Tons
- Cutting Plotter Machine - Printing Room
- Groove Cutter DP and installation
- HR-125 hot wire bending machine with fix & protect
- Buffing Machine with wheel
- CMA1309-BA Laser Cut Machine 130 W
- HP Latex Printer - 570-64 N2G70A
- DND BENDING MACHINE 150
- LASER WELDING MACHINE 300W
- COLD LAMINATING MACHINE EXCELAM-160
- LD-5000S ATC CNC Router 4x8
- EZ CHANNEL BENDER-C TYPE MACHINE
- CANON-COLORADO 1650 PRINTER-MPI-34347
- Kuper FWS 920 veneer splicing machine
- 250 WATT TIG Welding machine - JASIC brand ASP
- Fiber laser cutting machine SN 70924 - 001

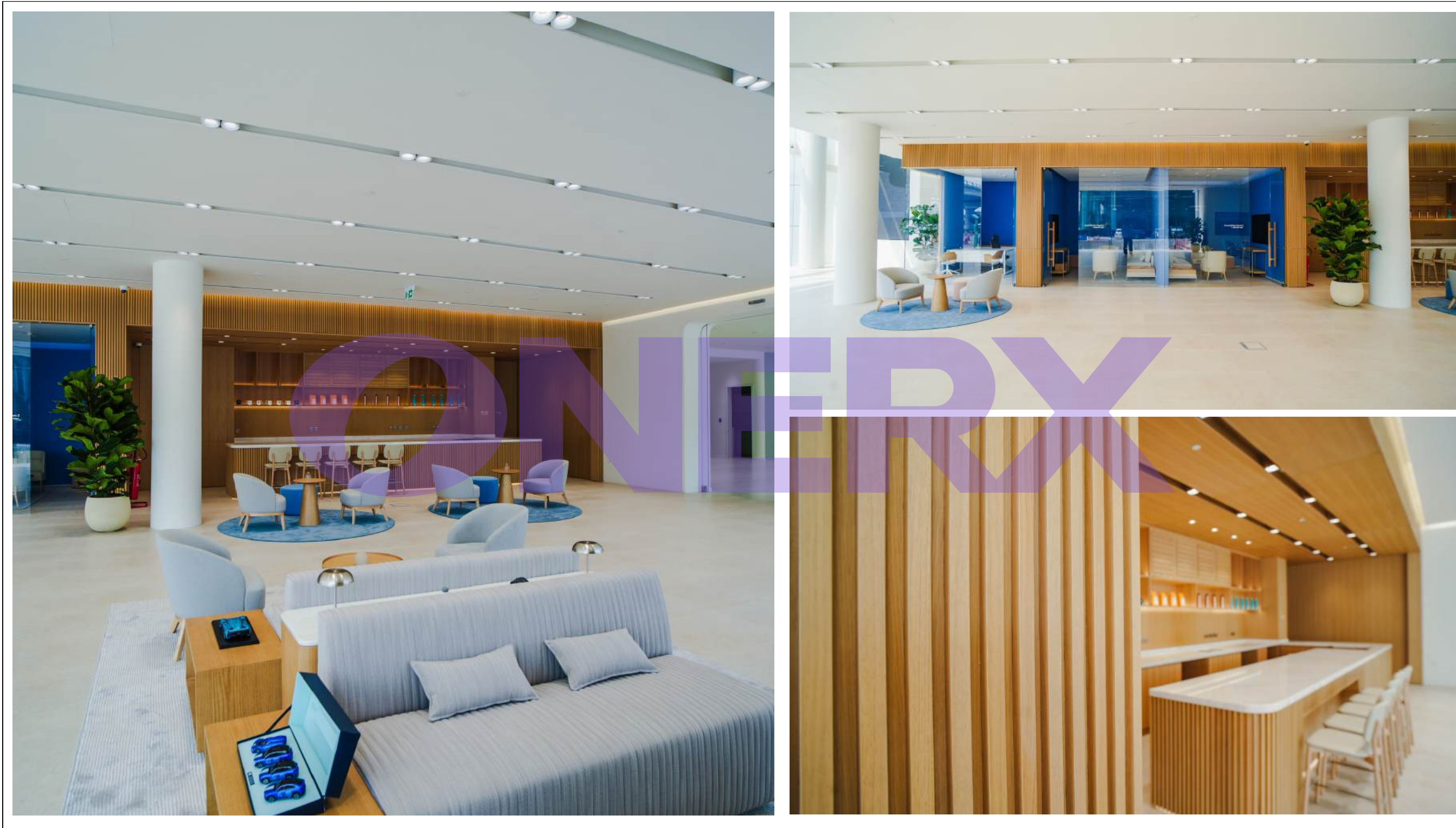
OneRx is a forward-thinking organization committed to delivering excellence through innovation, integrity, and customer-centric solutions. Since its inception, the company has consistently grown by staying ahead of industry trends and embracing technological advancements. We maintain a strong focus on quality, reliability, and long-term value for our clients, partners, and stakeholders. Our mission is to create impactful solutions that drive progress and set new standards in our field.

Our success is powered by a skilled team and a leadership group with deep industry expertise and strategic vision. We foster a culture of collaboration, accountability, and continuous improvement at every level of the organization. With clear values and a purpose-driven approach, we are committed to achieving sustainable growth and building lasting partnerships. As we move forward, we aim to lead with innovation, adaptability, and a strong sense of responsibility toward all our stakeholders.

02 Projects



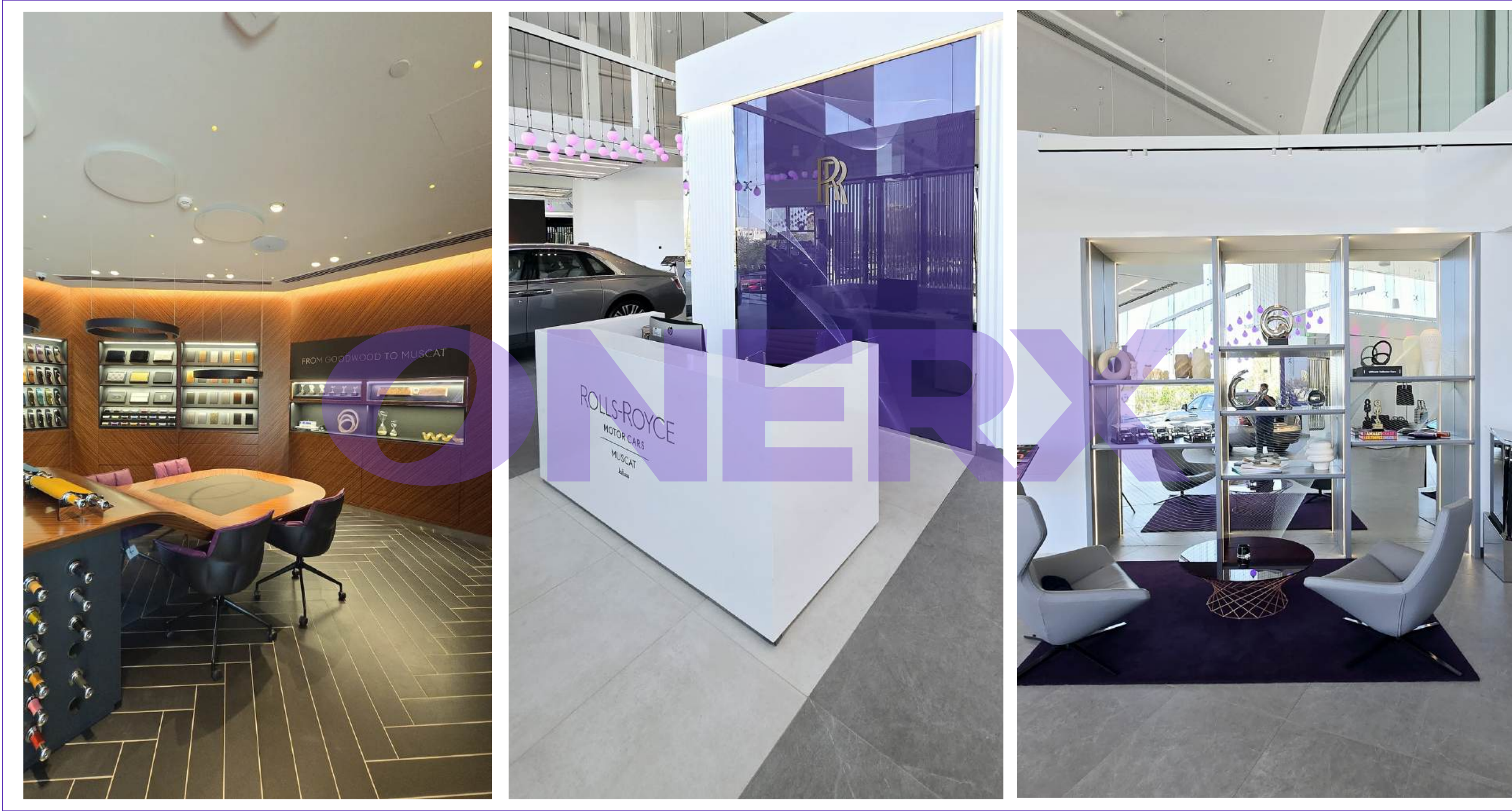
INTERIOR FIT OUT



PROJECT NIO HUB
LOCATION DUBAI



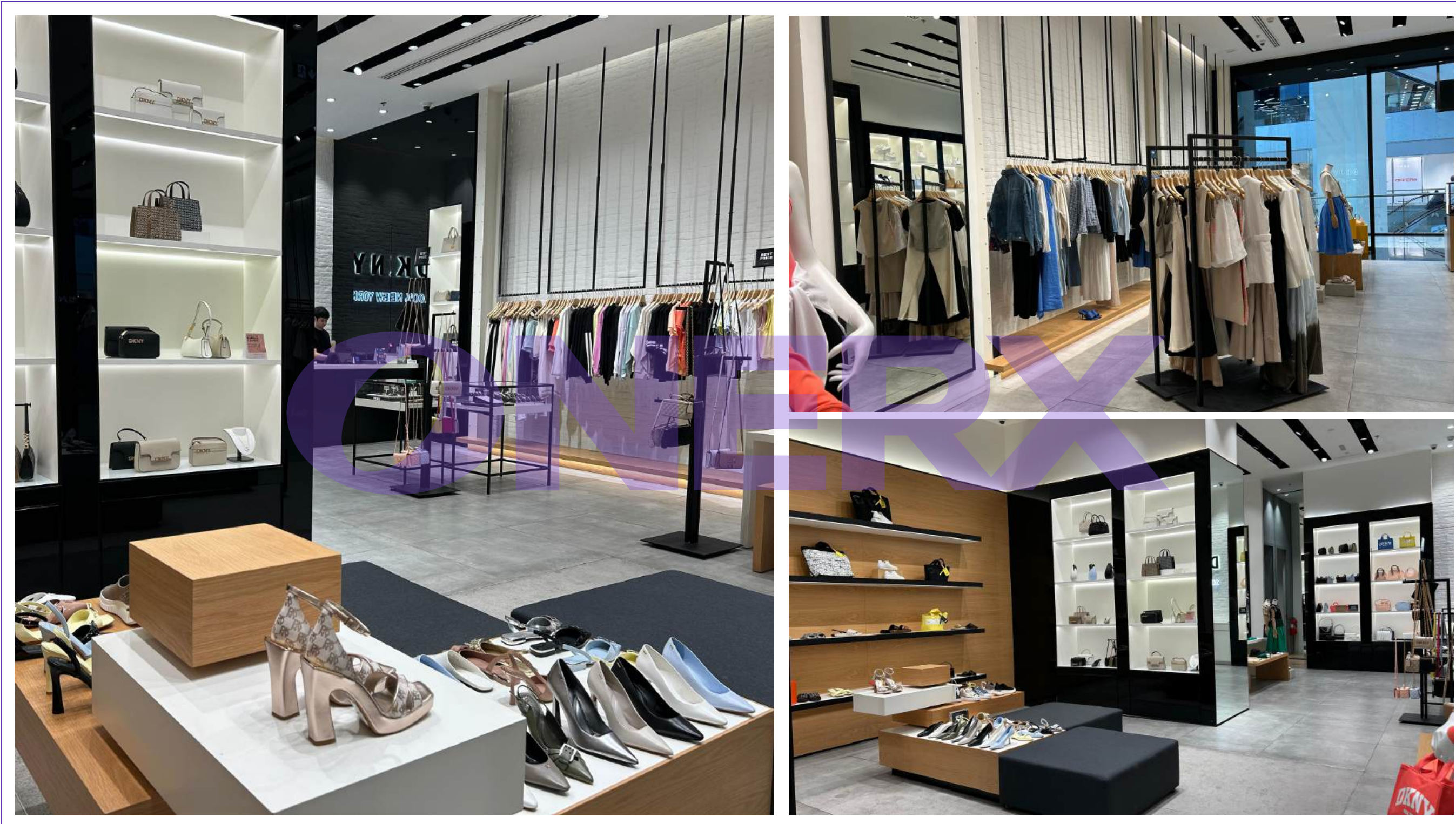
PROJECT ROLLS ROYCE
LOCATION KUWAIT



PROJECT ROLLS ROYCE
LOCATION OMAN



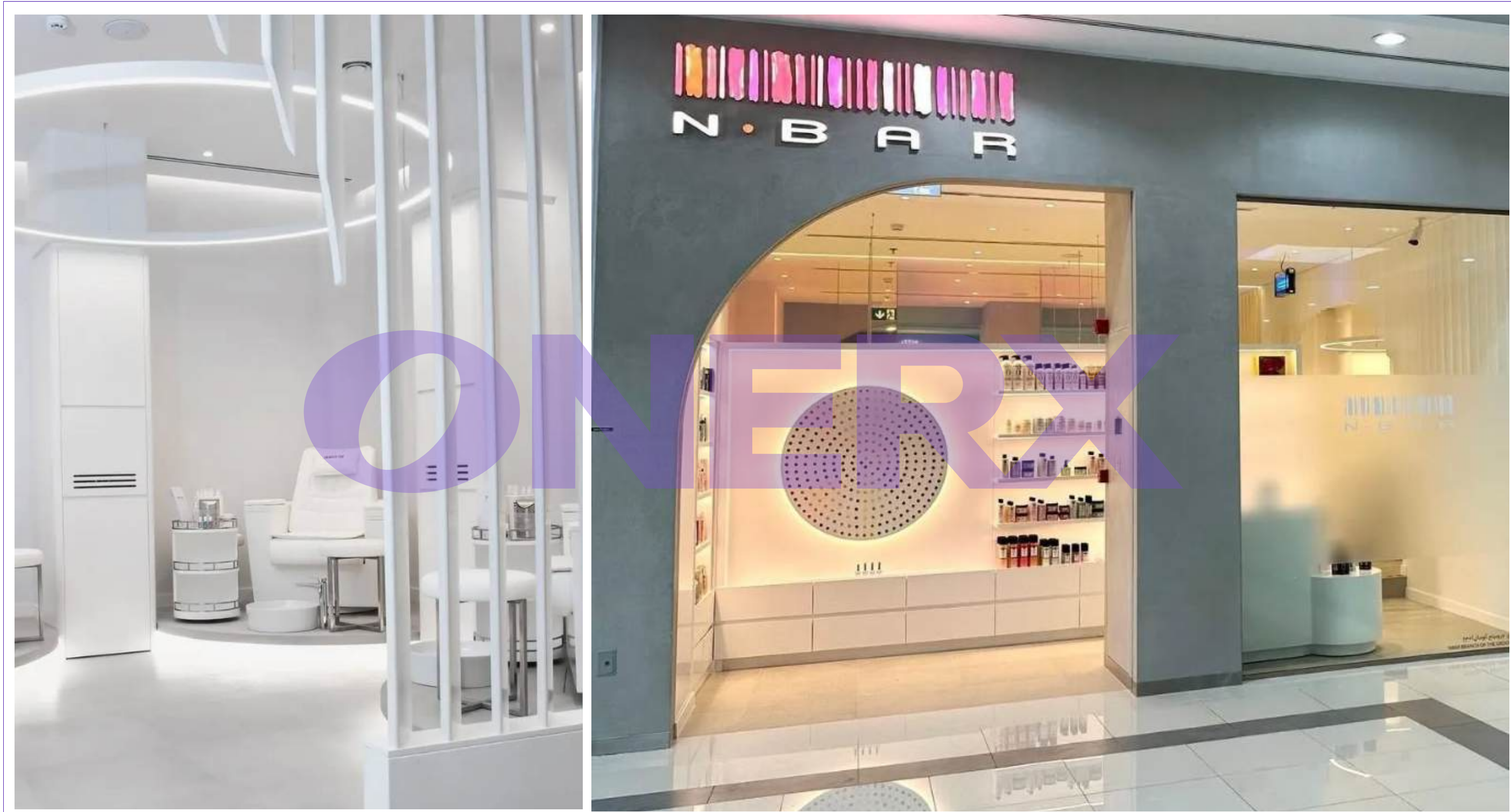
PROJECT ROLLS ROYCE
LOCATION ABU DHABI



PROJECT DKNY
LOCATION PALM JUMEIRAH MALL



PROJECT POCO OPTICS
LOCATION MIRDIF CITY CENTER, DUBAI



PROJECT N BAR
LOCATION DUBAI

EXHIBITIONS & EVENTS





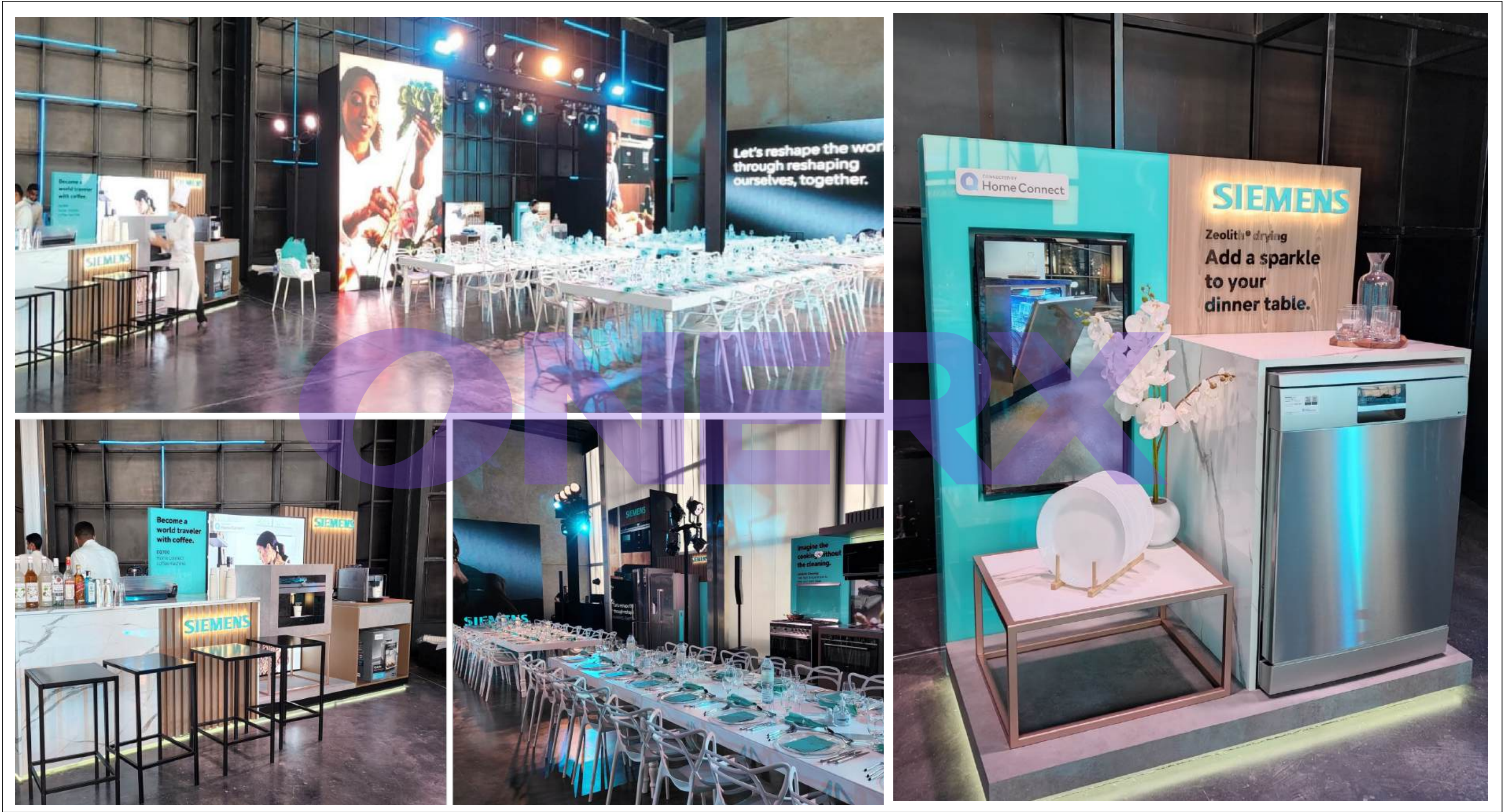
PROJECT SAMSUNG GAME EXPO
LOCATION KOREA



PROJECT TRAILER EVENT
LOCATION DUBAI



PROJECT GALAXY CREATORS LOUNGE
LOCATION KUWAIT



PROJECT SIEMENS
LOCATION DUBAI



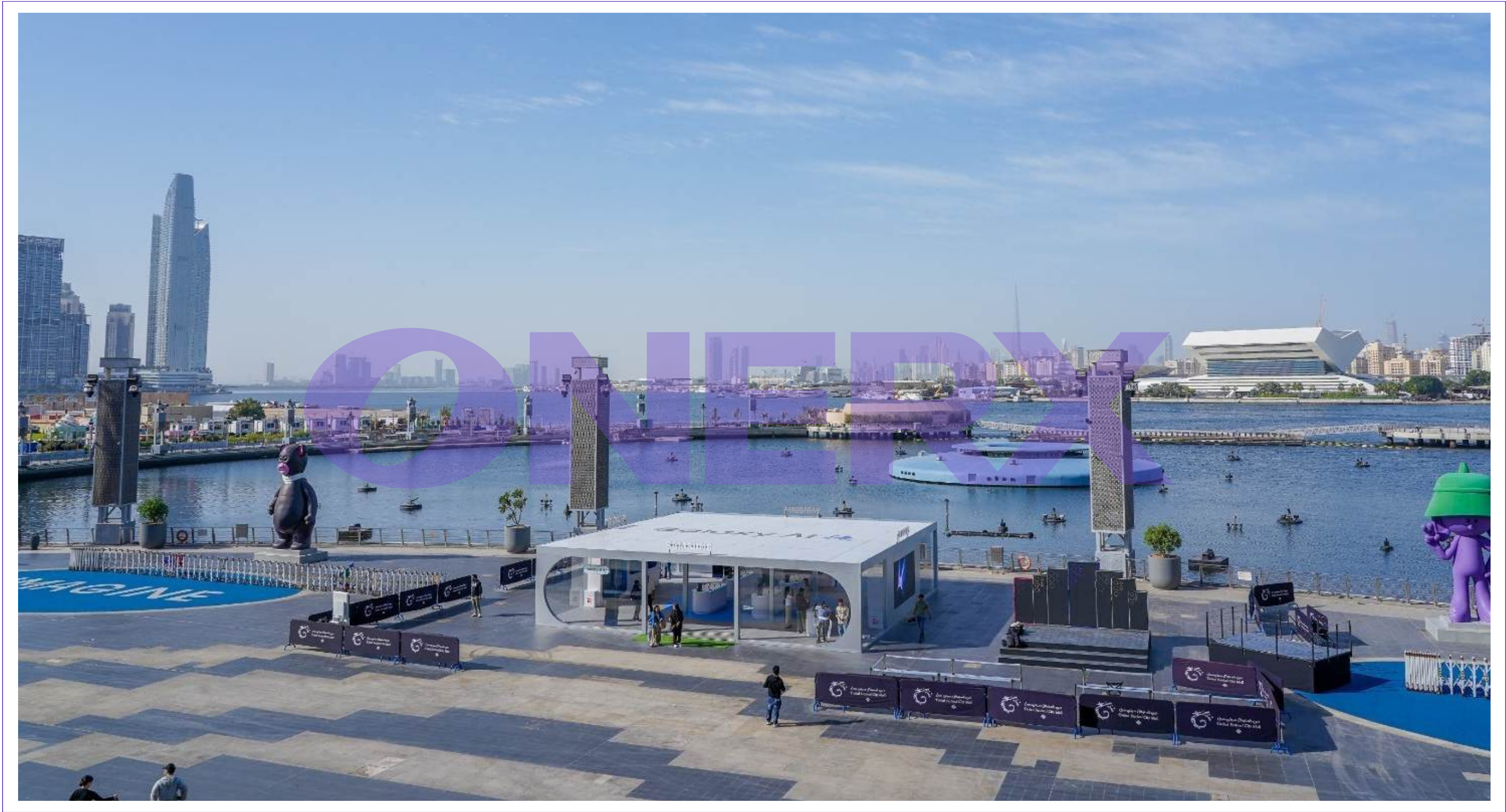
PROJECT IN5 STAND AT STEP CONFERENCE
LOCATION DUBAI



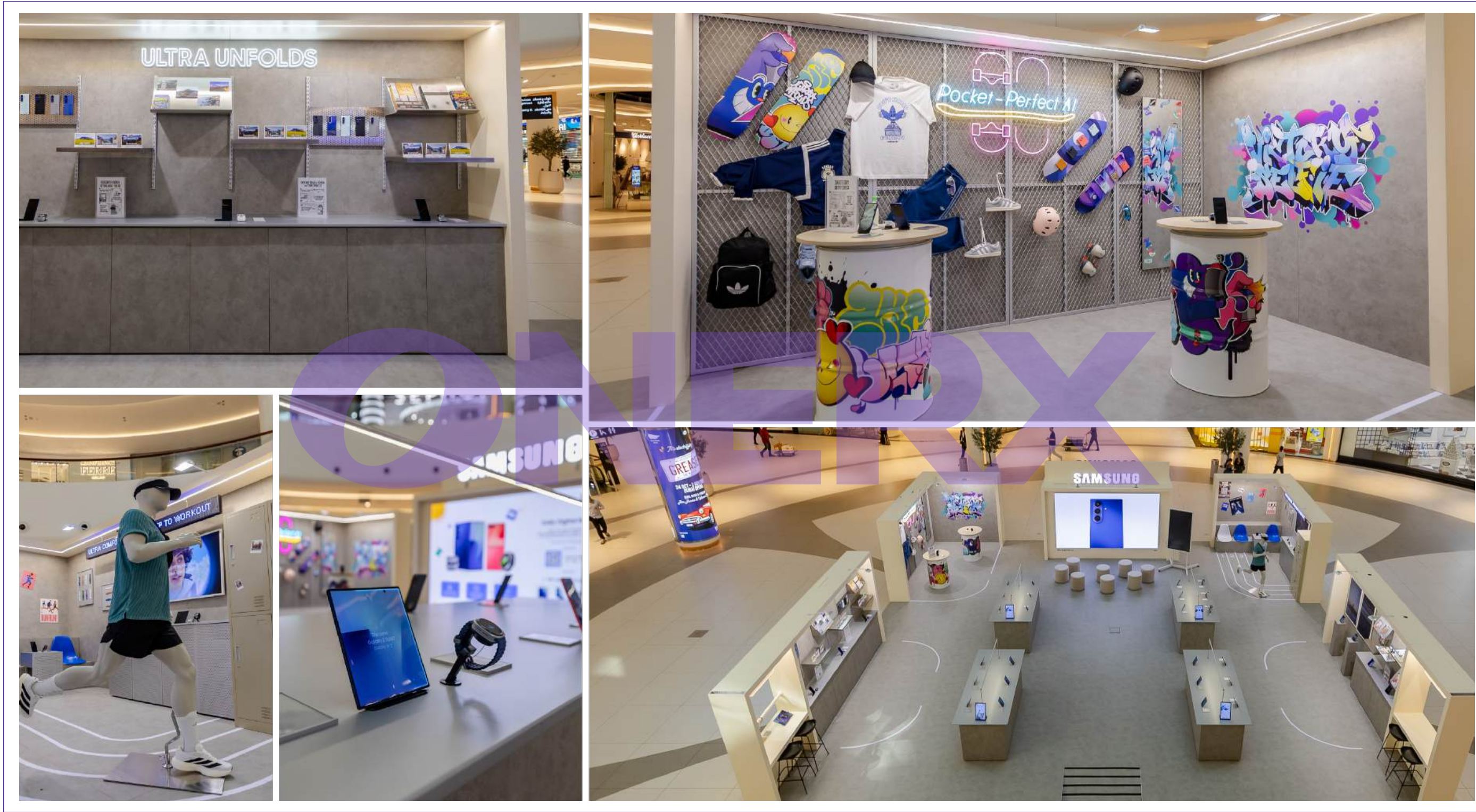
PROJECT SAMSUNG
LOCATION DUBAI



PROJECT SAMSUNG ILP
LOCATION DUBAI



PROJECT SAMSUNG ILP
LOCATION DUBAI



PROJECT SAMSUNG FOLD7 FLIP7 ILP DUBAI MALL
LOCATION DUBAI

WAY FINDERS

OUR PROCESS

Our process consists of three key pillars



Strategy



Design



Implementation



ONERX

UAE

OneRX Interior Decoration LLC, Plot No - 598 - 709
Next to Dubai Metal Grating & Manufacturing LLC DIP-1, Dubai / UAE

info@one-rx.com | +971 4 371 9200
©2025. OneRX All rights reserved. Confidential and Proprietary Materials.