



**LAPIZ BLUE GENERAL TRADING LLC**

[WWW.LAPIZBLUE.COM](http://WWW.LAPIZBLUE.COM)



**LapizBlue**

DUBAI: +971 4 885 5257

ABU DHABI: +971 2 886 7753

EMAIL ID: [info@lapizblue.com](mailto:info@lapizblue.com)



011 41721111 011 41721111





"Revamp your construction game with our products,  
Crafted to perfection and built to conduct,  
From sturdy foundations to soaring heights,  
Our building materials will help you reach new heights!"



LapizBlue

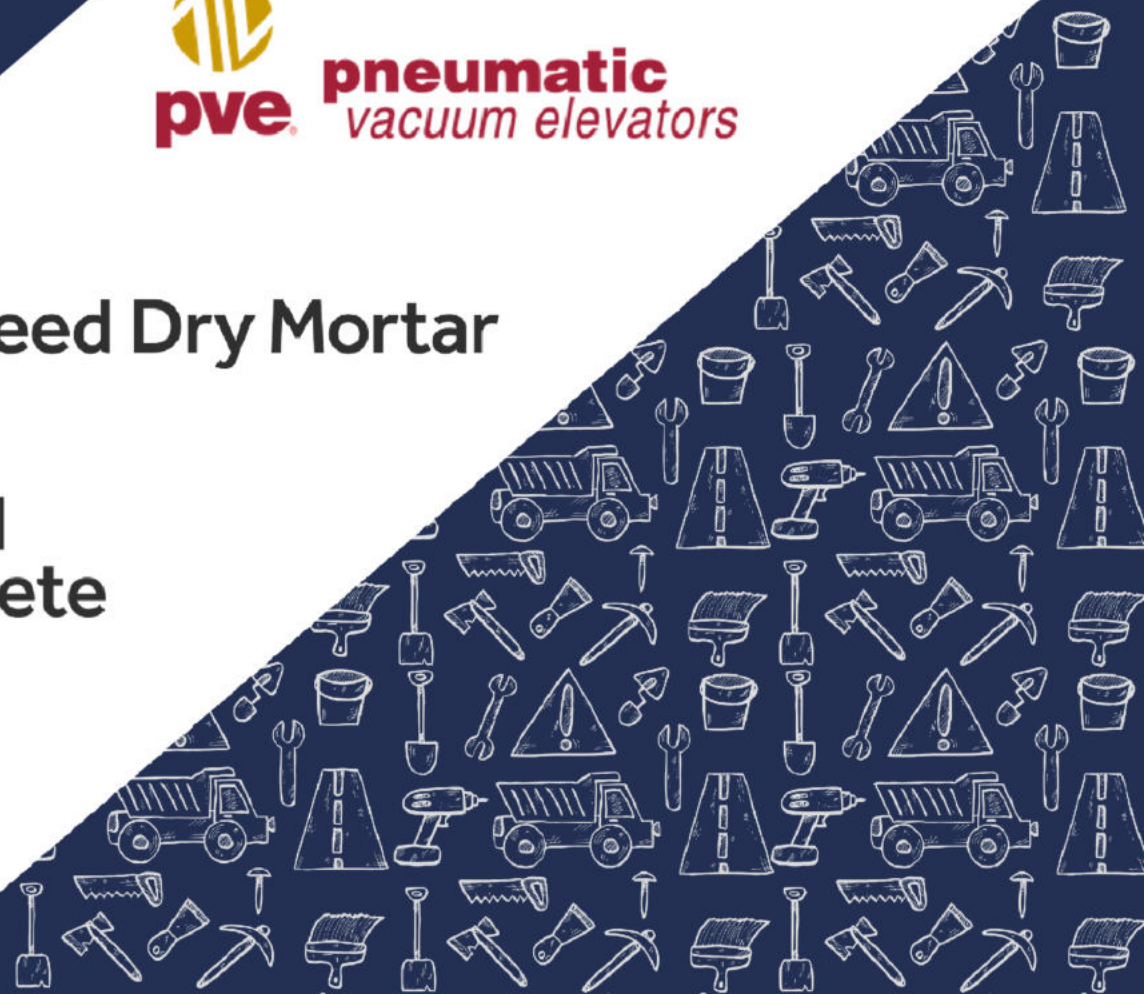


SHAPING MOSAICS



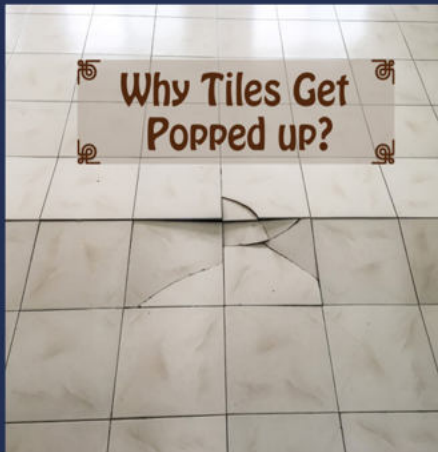
Exeed Dry Mortar

Exeed  
Litecrete

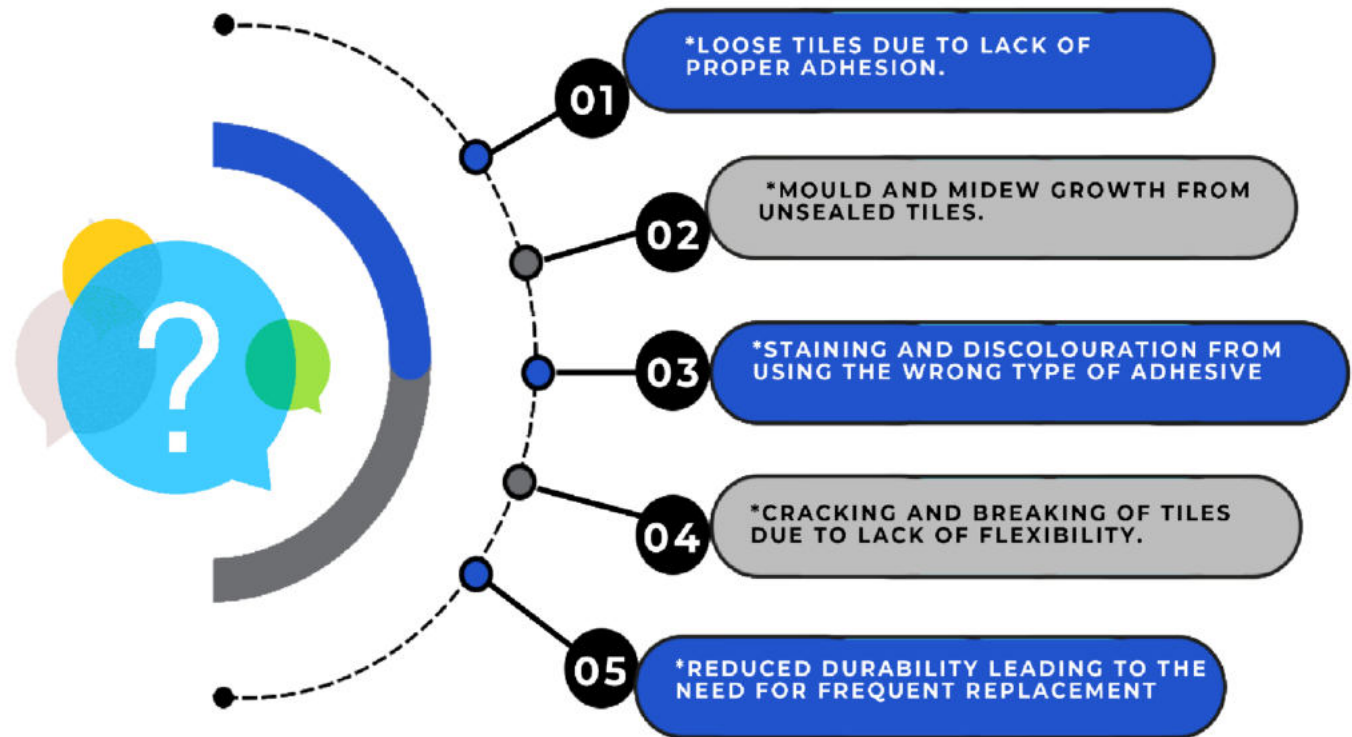




# IMPROPER ADHESIVE



## PROBLEMS THAT CAN ARISE FROM IMPROPER TILE ADHESIVE APPLICATION INCLUDE:





# ADHESIVES AND GROUT



## Mapeset

Cement based adhesive for tiles.

**APPLICATION:** notched trowel n. 4 or 5 or 6

**CONSUMPTION:** 2-5 kg/m<sup>2</sup>.



## Keraset

Cementitious adhesive for ceramic tiles.

**APPLICATION:** notched trowel to be selected depending on the format of the tiles

**CONSUMPTION:** 2-5 kg/m<sup>2</sup>



## Kerabond T

Cementitious adhesive with no vertical slip for ceramic tiles.

**APPLICATION:** notched trowel to be selected depending on the format of the tiles

**CONSUMPTION:** 2-5 kg/m<sup>2</sup>



## Kerabond Plus

Improved adhesion cementitious adhesive with extended open time for ceramic tiles.

**APPLICATION:** notched trowel to be selected depending on the format of the tiles

**CONSUMPTION:** 2-5 kg/m<sup>2</sup>



## Adesilex P7

High performance cementitious adhesive with no vertical slip for ceramic and porcelain tiles.

**APPLICATION:** using a suitable notched trowel

**CONSUMPTION:** 1.2 kg/m<sup>2</sup> per mm of thickness



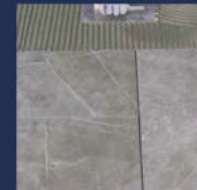
## Adesilex P9

High-performance cementitious adhesive with no vertical slip and extended open time for ceramic tiles and stone material.

Note: The white version has excellent whiteness and workability.

**APPLICATION:** notched trowel to be selected depending on the format of the tiles

**CONSUMPTION:** 2-5 kg/m<sup>2</sup>



# ADHESIVES AND GROUT



## Adesilex P9 Express

High-performance rapid-setting cementitious adhesive with extended open time for bonding ceramic tiles.

**APPLICATION:** notched trowel to be selected depending on the format of the tiles

**CONSUMPTION:** 2.5-5 kg/m<sup>2</sup>



## Adesilex P10

High-performance cementitious adhesive with no vertical slip and extended open time for glass mosaic, ceramic and marble coverings.

**APPLICATION:** notched trowel to be selected depending on the format of the tiles.

**CONSUMPTION:** 2-5 kg/m<sup>2</sup>



## Keraflex

High-performance cementitious adhesive with no vertical slip and extended open time for ceramic and stone tiles.

**APPLICATION:** notched trowel to be selected depending on the format of the tiles

**CONSUMPTION:** 2-5 kg/m<sup>2</sup>



## Keraflex Maxi S1

High-performance, deformable cementitious adhesive with excellent whiteness, no vertical slip, extended open time, excellent workability and Low Dust technology for ceramic tiles.

**APPLICATION:** notched trowel to be selected depending on the format of the tiles

**CONSUMPTION:** 1.2 kg/m<sup>2</sup> per mm of thickness.



## Ultralite S2

One-component, high-performance, highly-deformable, lightweight cementitious adhesive with extended open time, very high yield, for ceramic tiles and stone, ideal for thin porcelain tiles.

**APPLICATION:** n° 4, 5, 6 or 10 notched trowel.

**CONSUMPTION:** 0.8 kg/m<sup>2</sup> per mm of thickness.



## Granirapid

Two-component, high-performance, deformable, quick-setting and hydrating cementitious adhesive for rubber tiles bonded to cement.

**APPLICATION:** n. 10 Mapei notched trowel

**CONSUMPTION:** 8 kg/m<sup>2</sup>.





# ADHESIVES AND GROUT



## Keracolor FF

Pre-blended, high-performance, polymer-modified cementitious mortar with water repellent Drop Effect technology for grouting joints up to 6mm wide.

**APPLICATION:** rubber trowel

**CONSUMPTION:** according to the size of the joints and tiles



## Ultracolor Plus

High-performance, anti-efflorescence, quick-setting and drying polymer-modified mortar free from Portland cement with water-repellent DropEffect® and mould-resistant BioBlock® with greenhouse gas emissions offset for grouting joints between ceramic and stone tiles and mosaics.

**APPLICATION:** rubber trowel

**CONSUMPTION:** according to the size of the joints and tiles



## Kerapoxy

Two-component, anti-acid epoxy mortar for grouting ceramic tiles and stone material. For joints of at least 1 mm. Can also be used as an adhesive.

**APPLICATION:** rubber trowel

**CONSUMPTION:**

- used as grout: according to the size of the joints and tiles
- used as adhesive: 2-4 kg/m<sup>2</sup>



## Kerapoxy Easy Design

Two-component, epoxy grout with a bacteriostatic agent and BioBlock® technology, easy to apply and clean. Versatile, decorative, acid-resistant, ideal for grouting ceramic tiles, glass mosaic and stone material. To be used also in combination with MapeGlitter and Mapecolor Metallic

**APPLICATION:** rubber trowel

**CONSUMPTION:**

- used as grout: according to the size of the joints and tiles;
- used as adhesive: 2-4 kg/m<sup>2</sup>



## Kerapoxy CQ

Two-component anti-acid epoxy grout, easy to apply and to clean, with bacteriostatic agent (BioBlock® technology), ideal for grouting ceramic and stone tiles and mosaics. For joints of at least 1 mm. Can also be used as an adhesive.

**APPLICATION:** rubber trowel

**CONSUMPTION:**

- used as grout: according to the size of the joints and tiles;
- used as adhesive: 2-4 kg/m<sup>2</sup>



## Keralastic T

Two-component, high-performance polyurethane adhesive with no vertical slip for ceramic tiles and stone material.

**APPLICATION:** notched trowel to be selected depending on the format of the tiles.

**CONSUMPTION:** 2-5 kg/m<sup>2</sup>



# ADHESIVES, GROUT & SEALANT



## Kerapoxy Adhesive

Two-component epoxy adhesive with no vertical slip for ceramic tiles and stone material.

**APPLICATION:** notched trowel to be selected depending on the format of the tiles

**CONSUMPTION:** 1.5 kg/m<sup>2</sup> per mm of thickness



## Ultrabond MS Rapid

Rapid-setting, deformable, hybrid assembly adhesive for interior and exterior use, with a high initial sucker effect.

**APPLICATION:** extrusion gun

**CONSUMPTION:** 5 meters of kerb, triangular section



## UltraCare Fuga Fresca

Polymeric paint to refresh the colour of the cementitious grout joints between tiles.

**APPLICATION:** brush or from the bottle

**CONSUMPTION:** according to the size of the joints and tiles



## Mapesil Z Plus

Universal mould-resistant acetic silicone sealant for sinks and sanitary ware. For movements up to 20%.

**APPLICATION:** extrusion gun

**CONSUMPTION:** 2.8 meters per 280 ml cartridge (10x10 mm section)



## Mapesil AC

Pure, mould-resistant, acetic silicone sealant with BioBlock® technology for movements up to 25%.

**APPLICATION:** gun

**CONSUMPTION:** 3.1 meters per 310 ml cartridge (10x10 mm section)



## Mapesil LM

Neutral silicone mould-resistant sealant for stone material with BioBlock® technology for movements up to 25%.

**APPLICATION:** extrusion gun

**CONSUMPTION:** 3.1 meters per 310 ml mm section)





# ADHESIVES, GROUT & SEALANT



## Mapectex MS Crystal

Crystal clear, flexible, hybrid sealant and adhesive with high modulus of elasticity, also for wet substrates.

**APPLICATION:** extrusion gun

**CONSUMPTION:** 3.0 meters per 300 ml cartridge (10x10 mm section)



## RESILIENT

### SOFT COVERING MATERIALS

## Ultrabond Eco TX2

"Pro-grade" adhesive with high initial tack and long open time, for textile flooring.

**APPLICATION:** n. 2, 3 Mapei notched trowel, TKB A2, B1, B2

**CONSUMPTION:** 300-450 g/m<sup>2</sup>



## Ultrabond Eco Fix

Adhesive and fixative with high residual tack for loose-lay flooring

**APPLICATION:** n. 1 Mapei trowel, TKB A1, A4 trowel and roller

**CONSUMPTION:** 80-150 g/m<sup>2</sup>



## Ultrabond Eco 375

Adhesive with long open time for vinyl floor and wall coverings.

**APPLICATION:** n. 1 Mapei trowel, TKB A1, A2 trowel

**CONSUMPTION:** 200-300 g/m<sup>2</sup>



## Adesilex G19

Two-component epoxy-polyurethane adhesive for installing indoor or outdoor resilient and textile flooring onto both absorbent and non-absorbent substrates. Specifically developed for the installation of rubber athletic tracks.

**APPLICATION:** 1, 2, 3, 4 Mapei notched trowel, TKB A1, A2, B1, B2, C1

**CONSUMPTION:** 350-1000 g/m<sup>2</sup>



# ADHESIVES, GROUT & SEALANT



## Lignobond

Two-component epoxy-polyurethane adhesive for installing wood flooring. Suitable for laying any size and type of wood on all substrates.

**APPLICATION:** n. 2 or 4 notched trowel for wood

**CONSUMPTION:** 800-1000 g/m<sup>2</sup>



## Ultrabond P990 1K

One-component, ready-to-use, solvent-free, flexible polyurethane adhesive for all types of parquet on screeds made from Mapecem, Mapecem Pronto, Topcem and Topcem Pronto, cementitious screeds, old wooden, ceramic, marble and terrazzo floors, etc.

**APPLICATION:** n. 2 or 4 notched trowel for wood

**CONSUMPTION:** 0.8-1 kg/m<sup>2</sup>



## Ultrabond P980 1K

One-component, solvent-free, silylated polymer-based adhesive for all types of parquet with very low emission level of volatile organic compounds.

**APPLICATION:** notched trowel.

**CONSUMPTION:** 0.8-1 kg/m<sup>2</sup>.

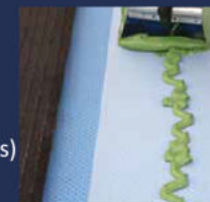


## Ultrabond Turf PU 1K LC

One-component, ready-to-use, polyurethane adhesive for bonding jointing strips between rolls of synthetic turf.

**APPLICATION:** n. 3, 4 Mapei notched trowel

**CONSUMPTION:** 0.23-0.26 kg per metre of 30 cm wide jointing strip (10 kg of adhesive for 43.5-38.5 metres)



## Ultrabond Turf 2 Stars Pro

Two-component, solvent-free polyurethane adhesive for the installation of synthetic turf of the latest generation.

**APPLICATION:** n. 3, 4 Mapei notched trowel

**CONSUMPTION:** 0.3-0.4 kg per metre of 30 cm wide jointing strip (10 kg of adhesive for 25-33 metres)



## Ultrabond Eco P909 2K

Two-component, solvent-free, polyurethane quick adhesive with very low emission level of volatile organic compounds, class EC1 Plus, for all types of parquet.

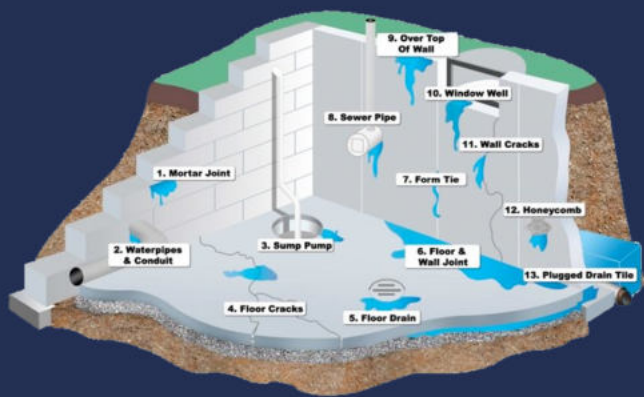
**APPLICATION:** notched trowel

**CONSUMPTION:** 800-1000 g/m<sup>2</sup>

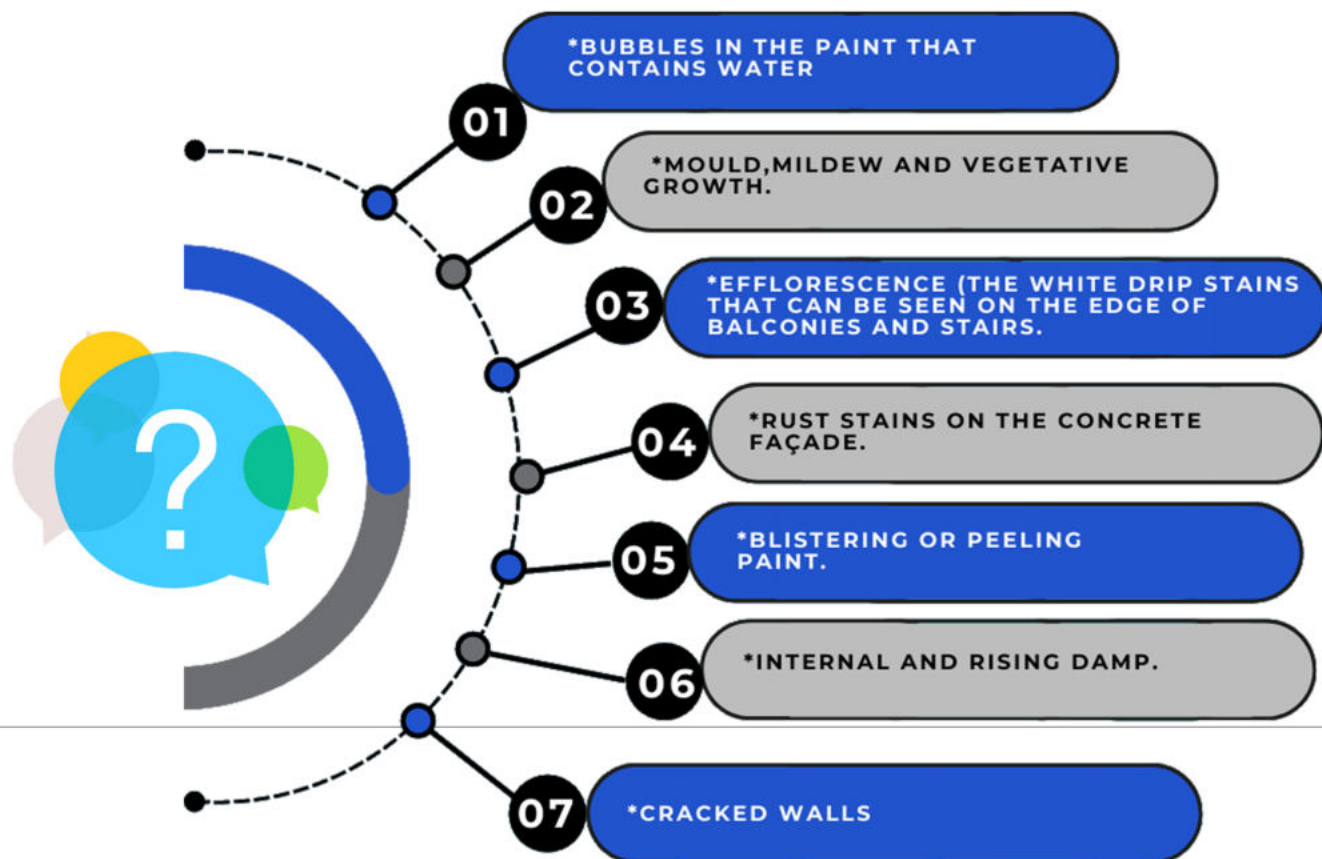




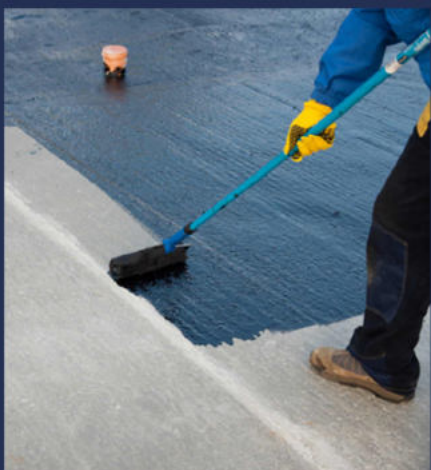
# WATER PROOFING PROBLEMS



## COMMON WATER PROOFING PROBLEMS:



# WATER PROOFING PRODUCT



## Planiseal 88

For waterproofing masonry and concrete structures.

**APPLICATION:** roller, brush or spray

**CONSUMPTION:** 1.5 kg/mm of thickness



## Mapelastic Smart

Two-component, high-flexibility cementitious mortar.

**APPLICATION:** roller, brush or spray

**CONSUMPTION:** 1.6 kg/m<sup>2</sup> per mm of thickness



## Monolastic

One-component cementitious elastic waterproofing mortar.

**APPLICATION:** trowel

**CONSUMPTION:** 1.1 kg/m<sup>2</sup> per mm of thickness

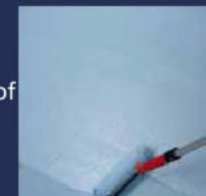


## Mapelastic AquaDefense

Ready-to-use, ultra quick-drying, flexible liquid membrane for waterproofing internal and external surfaces.

**APPLICATION:** roller, brush or spray

**CONSUMPTION:** 1.3 kg/m<sup>2</sup> per mm of thickness



## Purtop Easy

One-component, elastic polyurethane waterproofing membrane.

**APPLICATION:** roller, brush or spray

**CONSUMPTION:** 2 kg/ m<sup>2</sup> corresponds to a dry coat approx. 1.5 mm



## Purtop 1000 N

Two-component, solvent-free pure polyurea membrane applied by spray with a high-pressure, bi-mixer type pump, to form waterproof coatings for hydraulic works, roofs and bridge decks directly on site.

**APPLICATION:** spray using a high-pressure, bi-mixer type pump

**CONSUMPTION:** 2.2 kg/m<sup>2</sup> per 2 mm of thickness





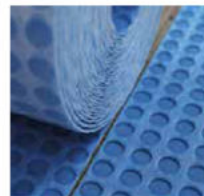
# WATER PROOFING PRODUCT



## Mapeguard UM 35

Waterproofing, uncoupling and anti-fracture membrane for cracked and damp substrates and substrates that are not fully cured before installing ceramic and stone tiles for internal and external surfaces without having to copy the layout of distribution joints in the substrate.

WIDTH :1 m  
LENGTH :30 m  
THICKNESS :35 mm



## Mapetex Sel N

Non-woven polypropylene fabric for reinforcing waterproofing membranes.



## Mapecoat DW 25

Two-component epoxy paint for coating concrete surfaces, suitable for contact with drinking water and foodstuff.

APPLICATION: roller, brush or spray  
CONSUMPTION: 0.2-0.3 kg/m<sup>2</sup> (per coat)



## Triblock P

Three-component epoxy-cementitious primer For water proofing non-absorbent damp substrates.

APPLICATION: roller, brush  
CONSUMPTION: 0.5 kg/m<sup>2</sup>



## Mapetex 50

Non-woven polypropylene fabric (weight 50 g/m<sup>2</sup>) for reinforcing waterproof membranes.



## Mapeband Easy

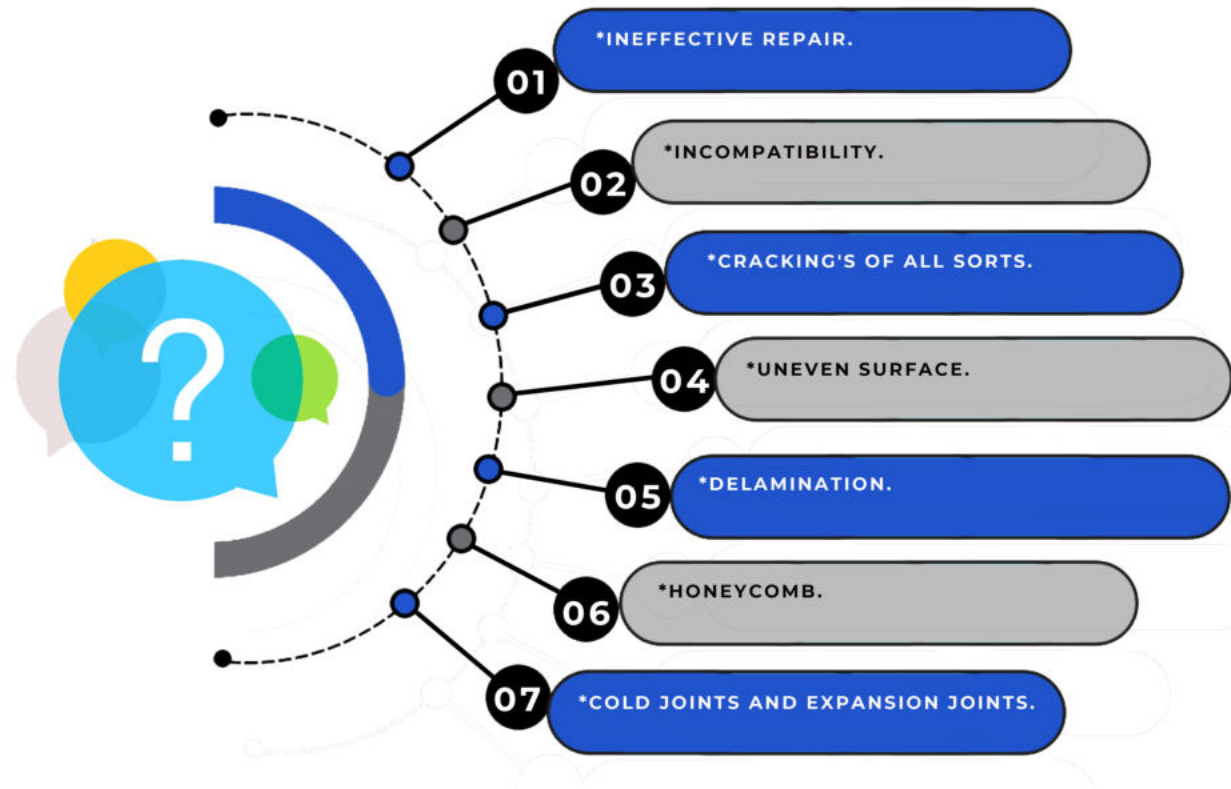
Rubber tape sandwiched between two layers of non-woven fabric to form elastic joints in waterproofing systems.



# REPAIRING & ANCHORING PROBLEMS



## PROBLEMS THAT CAN ARISE FROM IMPROPER STRUCTURAL BONDING, SCREED REPAIRING AND INJECTING INTO CRACKED CONCRETE INCLUDE:





# REPAIRS & MAINTENANCE SOLUTIONS



## CRACK REPAIR SOLUTION

### Eporip

Two component solvent-free epoxy adhesive for construction joints and for monolithic sealing of cracks in screeds.

APPLICATION: brush, trowel, or pouring

CONSUMPTION: 1.35 kg/dm<sup>3</sup> for bonding



### Epojet LV

Two-component epoxy resin, with very low viscosity for injection in microcracks, also on wet surfaces.

APPLICATION: injection or pouring

CONSUMPTION:

- sealing cracks: 1.1 kg/l of cavity to be filled;
- bonding steel to concrete: 1.1 kg/m<sup>2</sup> per mm



### Adesilex PG4

Two-component, thixotropic epoxy adhesive with modified rheology for bonding Mapeband, Mapeband TPE, PVC strips and Hypalon and for structural bonds.

APPLICATION: trowel

CONSUMPTION: 1.60-1.65 kg/m<sup>2</sup> per mm of thickness

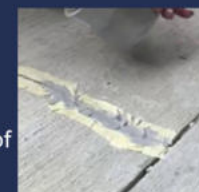


### Adesilex PG2 TG

Two-component thixotropic epoxy adhesive for bonding Mapeband, Mapeband TPE, hypalon and structural bonding.

APPLICATION: applied with a flat trowel or float

CONSUMPTION: 1.71 kg/m<sup>2</sup> per mm of thickness



### Planitop 220 ME

Two-component, polymer modified fairing coat for smoothing concrete surfaces.

APPLICATION: flat trowel or wet sponge float

CONSUMPTION: Depending on the surface substrate conditions. The average consumption is approx. 1.6 kg/m<sup>2</sup> per mm of thickness



# REPAIRS & MAINTENANCE SOLUTIONS



## Mapegrout ME06

High strength, shrinkage compensated, super-flow micro-concrete.

APPLICATION: pouring

CONSUMPTION: YIELD : 12.3 litres/25 kg



## Mapefill GP ME

General purpose non-shrink cementitious grout.

APPLICATION: Pouring

CONSUMPTION: Every 25 kg bag of Mapefill GP ME yields 13-14 litres of grout.



## Planigrout 300

Three-component fluid epoxy mortar for anchorage work.

APPLICATION: pouring

CONSUMPTION: 2 kg/m<sup>2</sup> per mm of thickness



## Mapegrout ME05

High performance, shrinkage compensated, high-flow micro-concrete and thick section grout

APPLICATION: pour or pump

CONSUMPTION: 12.7 liters per 25 kg.



## Mapefix EP 385/585

Pure epoxy, resin-based chemical anchor for structural loads. Certified for threaded bar, construction bars, core-drilled holes and C1 seismic loads.

APPLICATION: extrusion gun

CONSUMPTION: According to the size of hole to be filled



## Mapefix VE SF

Styrene-free, vinyl ester, hybrid resin-based chemical fastener for structural loads. Certified for threaded rods, rebar, C1 seismic performance.

APPLICATION: extrusion gun

CONSUMPTION: 300 ml, 420 ml

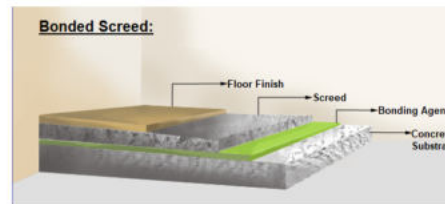
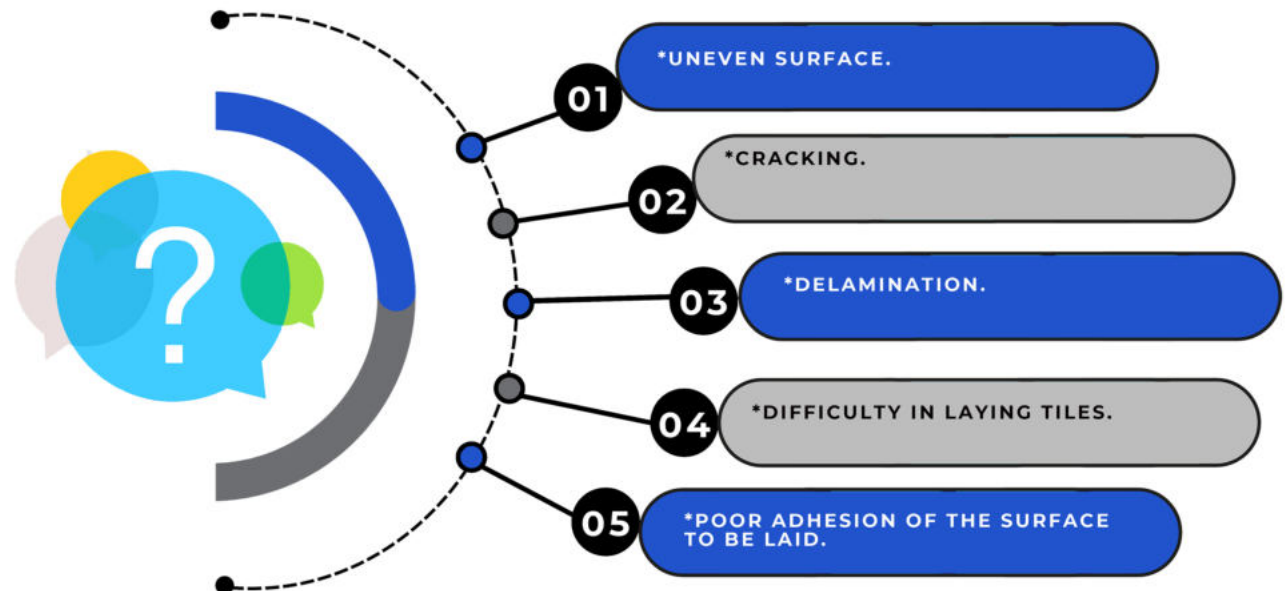




# SCREEDS & SMOOTHENING COMPOUNDS



## PROBLEMS THAT CAN ARISE FROM IMPROPER SCREEDING INCLUDE:



# SCREEDS & SMOOTHENING SOLUTIONS



## Ultraplan

Self-levelling, ultra quick-hardening smoothing compound for thicknesses from 1 to 10 mm.

APPLICATION: trowel, rake, or pump

CONSUMPTION: 1.6 kg/m<sup>2</sup> per mm of thickness



## Ultraplan Contract

Self-levelling, ultra quick-hardening smoothing compound ideal for large sites and retails for thicknesses from 1 to 10 mm.

APPLICATION: trowel, rake, or pump

CONSUMPTION: 1.6 kg/m<sup>2</sup> per mm of thickness



## Ultraplan Eco

Self-levelling, ultra quick-hardening smoothing compound for thicknesses from 1 to 10 mm.

APPLICATION: trowel, rake, or pump

CONSUMPTION: 1.6 kg/m<sup>2</sup> per mm of thickness



## Ultraplan Eco 20

Rapid-hydrating, fast-drying self-levelling compound.

APPLICATION: trowel, rake, or pump

CONSUMPTION: 1.6 kg/m<sup>2</sup> per mm of thickness



## Ultraplan Maxi

Self-levelling, ultra rapid-hardening smoothing compound for thicknesses from 3 to 40 mm.

APPLICATION: trowel or pump

CONSUMPTION: 1.7 kg/m<sup>2</sup> per mm thickness



## Nivoplan

Smoothing mortar for walls and ceilings in interior and exterior

APPLICATION: gauging trowel or trowel

CONSUMPTION: 14 kg/m<sup>2</sup> per cm of thickness





# SCREEDS & SMOOTHENING SOLUTIONS



## Topcem

Special normal-setting, quick-drying (4 days), controlled-shrinkage hydraulic binder for screeds.

**APPLICATION:** tapping and flattening with a straight edge

**CONSUMPTION:** 2-2.5 kg/m<sup>2</sup> per cm of thickness



## Topcem Pronto

Ready-to-use, normal-setting, controlled-shrinkage mortar with high thermal conductivity for quick-drying screeds (4 days).

**APPLICATION:** tapping and flattening with a straight edge

**CONSUMPTION:** 18-20 kg/m<sup>2</sup> per cm of thickness



## Nivorapid

Quick-drying, thixotropic, cementitious smoothing compound for thicknesses from 1 to 20 mm, including on vertical surfaces. Ideal for localised repair works.

**APPLICATION:** metal trowel

**CONSUMPTION:** 1.6 kg/m<sup>2</sup> per mm of thickness



## Planex HR

Rapid-drying, moisture-resistant, self-levelling, smoothing compound, for thicknesses from 1 to 10 mm.

**APPLICATION:** trowel, rake, or pump

**CONSUMPTION:** 1.7 kg/m<sup>2</sup> per mm of thickness



## Planex HR Maxi

Rapid-drying, moisture-resistant, self-levelling, smoothing compound, for thicknesses from 2 to 20 mm.

**APPLICATION:** trowel, rake, or pump

**CONSUMPTION:** 1.7 kg/m<sup>2</sup> per mm of thickness



## Planiprep Fast Track

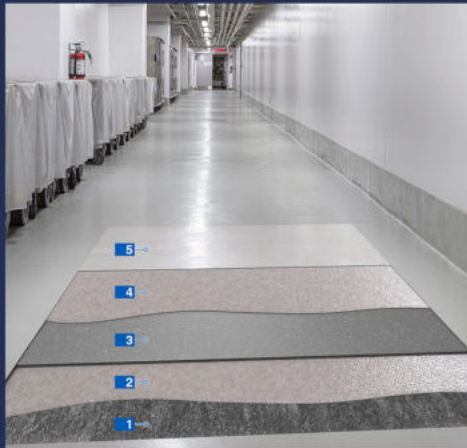
Ultra rapid-drying fine textured thixotropic cementitious skimming compound.

**APPLICATION:** trowel

**CONSUMPTION:** approx. 1.0 kg/m<sup>2</sup> per mm of thickness

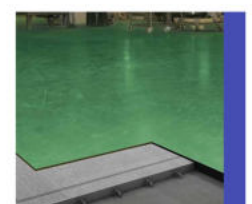
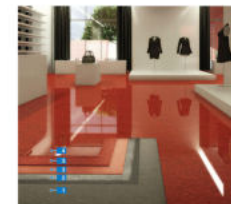
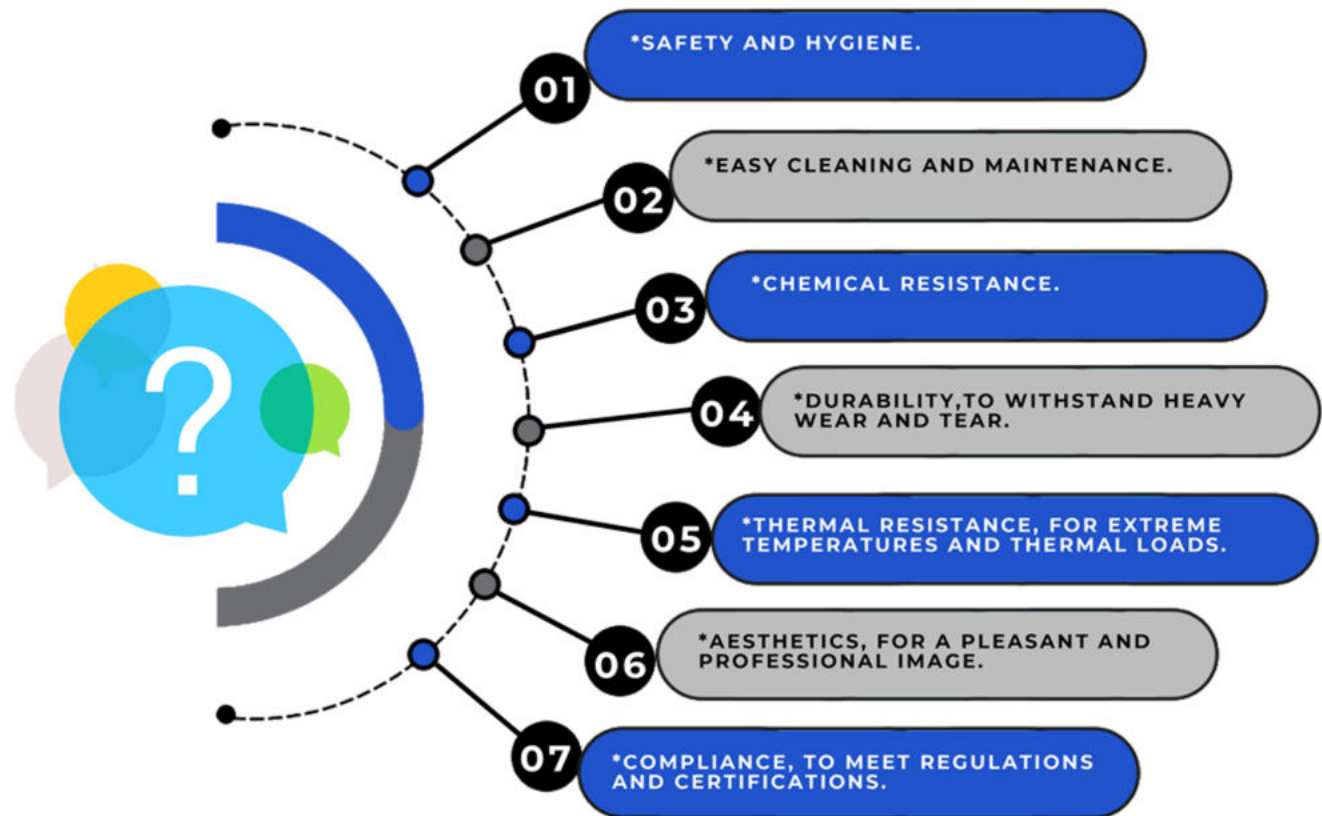


# FLOORING & COATINGS



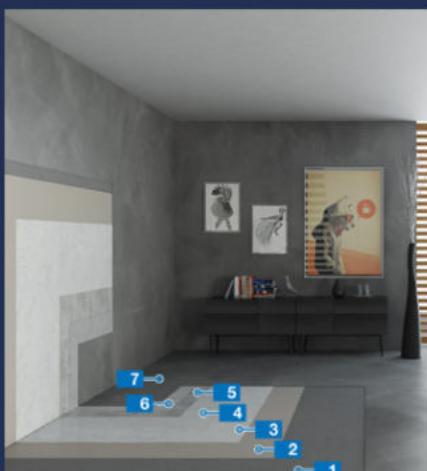
## WHY IS FLOORING IMPORTANT?

Proper flooring is essential in industrial and commercial environments such as kitchens, laboratories and warehouses because it provides:





# DECORATIVE, FLOORING & COATINGS



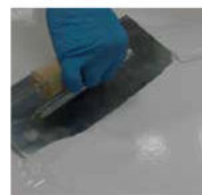
## MICROTOPING

### Ultratop Loft F

One-component trowellable coarse-textured cementitious paste applied in layers up to 2 mm thick to create decorative floors with a trowelled or mottled effect.

**APPLICATION:** rubber, Teflon, or steel straight trowel

**CONSUMPTION:** 0.7-1 kg/m<sup>2</sup> 0 m



### Ultratop Loft W

One-component trowellable fine-textured cementitious paste applied in layers up to 2 mm thick to create decorative floors with a trowelled or mottled effect.

**APPLICATION:** rubber, Teflon, or steel straight trowel

**CONSUMPTION:** 0.7-1 kg/m<sup>2</sup>

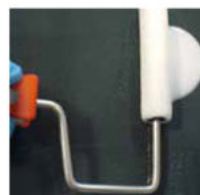


### Mapecolor Finish 58 W

Two-component, aliphatic, water-based, transparent, matt polyurethane finish.

**APPLICATION:** mohair roller or airless spray

**CONSUMPTION:** 0.1-0.2 kg/m<sup>2</sup> depending on the level of roughness and porosity of the substrate



### Mapelux Lucida

Double-reticulation, high-strength shiny metallic wax

**APPLICATION:** specific waxing mop

**CONSUMPTION:** 50 g/m<sup>2</sup>



### Mapelux Opaca

Double-reticulation, high-strength matt metallic wax.

**APPLICATION:** specific waxing mop

**CONSUMPTION:** 50 g/m<sup>2</sup>



# INDUSTRIAL FLOORING & COATINGS



## INDUSTRIAL FLOORING

### Mapecfloor CPU+/MF

straight metal trowel or rake with spacers

APPLICATION: straight metal trowel

CONSUMPTION: 1.7 kg/m<sup>2</sup> per mm of thickness



### Mapecfloor CPU+/HD

Three-component, antimicrobial high-strength polyurethane-cement mortar with high resistance to chemicals for industrial floors, applied in thicknesses from 6 to 12 mm

APPLICATION: straight metal trowel

CONSUMPTION: 2 kg/m<sup>2</sup> per mm of thickness



### Mapecfloor CPU+/RT

Three-component, antimicrobial, high-strength, polyurethane-cement mortar with high resistance to chemicals for coating industrial floors applied in thicknesses from 6 to 9 mm.

CONSUMPTION: 1.9 kg/m<sup>2</sup> per mm of thickness



### Mapecfloor FC 200 ME

High build epoxy resin floor coating

#### CONSUMPTION:

\* Multi-layered, roll coat/ structured finish coating  
Primer: (if required) Primer SN (A+B): 0.15-0.25 kg/m<sup>2</sup>  
1st coat: Mapecfloor FC 200 ME (A+B): 0.32 kg/m<sup>2</sup>  
Finishing coat: Mapecfloor FC 200 ME (A+B): 0.32 kg/m<sup>2</sup>  
\*Multi-layered non-slip coating  
Primer: (if required) Primer SN (A+B): 0.15-0.25 kg/m<sup>2</sup>  
1st coat: Mapecfloor FC 200 ME (A+B): 0.35-0.40 kg/m<sup>2</sup>  
Broadcast with Quartz 0.5 at 0.5-1.0 kg/m<sup>2</sup>  
Finishing coat: Mapecfloor FC 200 ME (A+B): 0.35-0.40 kg/m<sup>2</sup>.



### Mapecfloor I 300 SL

Two-component, multi-purpose, epoxy formulate for industrial floor coatings up to 4 mm thick. Complies with standards applied in the foodstuffs sector and to the Radon gas tightness

APPLICATION: roller, straight and notched trowel

#### CONSUMPTION:

- 2.0 kg/m<sup>2</sup> as self-levelling coating with 2 mm thickness
- 0.9 kg/m<sup>2</sup> as intermediate layer in anti-slip coating with 3 mm thickness\*
- 0.6 kg/m<sup>2</sup> as finishing layer of the anti-slip coating both with 1 mm, or 3 mm thickness





# RESIN FLOORING



## RESIN FLOORING

### MAPEFLOOR PARKING ED

#### PRIMER SN

+

#### Mapecolor Finish 415 ME

(Two-component, aromatic coloured, flexible, wear-resistant polyurethane finish)

+

#### Mapecolor Finish 450 ME

(Two-component, aliphatic, elastic coloured polyurethane finish resistant to wear and UV rays)

### MAPEFLOOR PARKING WD

#### PRIMER SN

+

#### Mapecolor PU 410

(Two-component, neutral-colored, self-leveling, flexible polyurethane fillerized binder)

+

#### Mapecolor Finish 415 ME

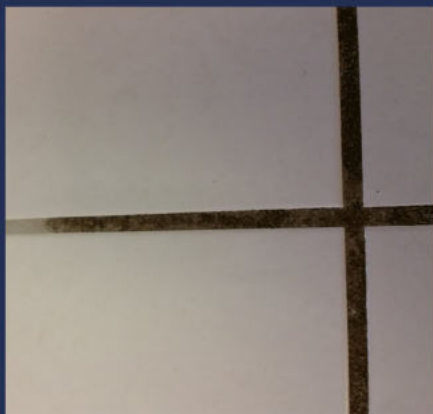
(Two-component, aromatic coloured, flexible, wear-resistant polyurethane finish)

+

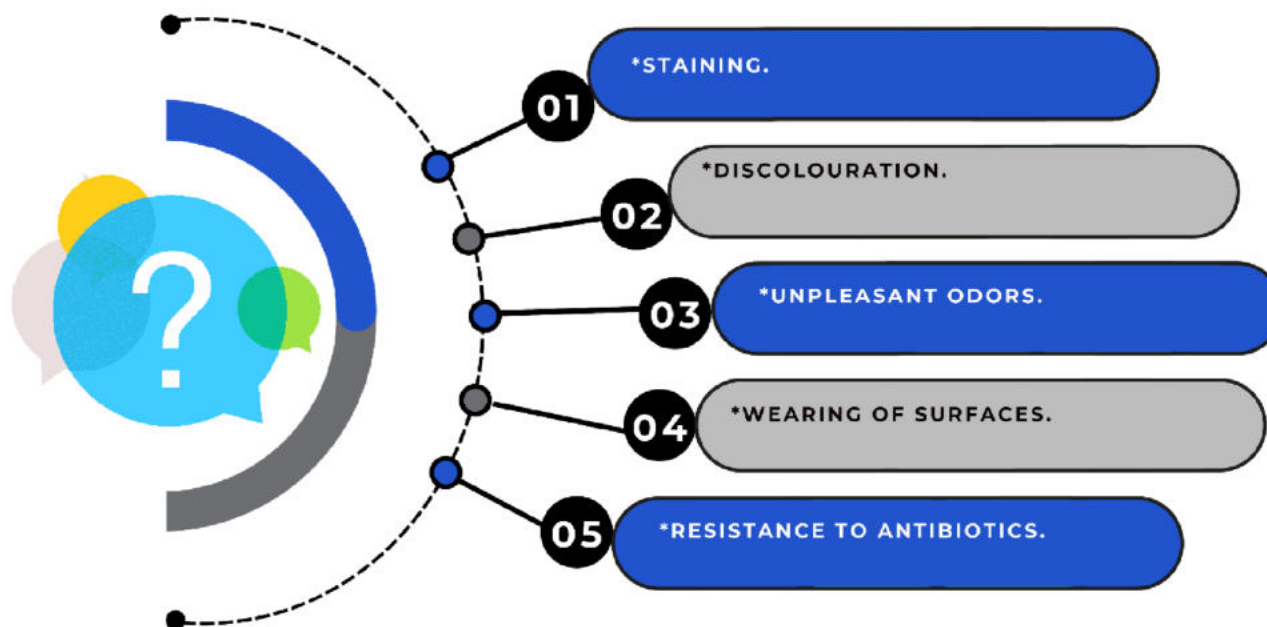
#### Mapecolor Finish 450 ME

(Two-component, aliphatic, elastic coloured polyurethane finish resistant to wear and UV rays)

# CLEANING AND MAINTENANCE PROBLEM



## PROBLEMS THAT CAN ARISE FROM IMPROPER CLEANING, MAINTAINING AND PROTECTING SURFACES INCLUDE:





# CLEANING & MAINTENANCE SOLUTIONS



## CLEANER

### UltraCare HD Cleaner

Concentrated high performing professional detergent to remove organic dirt and to undertake a deep clean of surfaces. It is also effective as wax remover for water-based and metal-flake waxes.

**APPLICATION:** rotary-head cleaner or abrasive pad

**CONSUMPTION:** depending on dilution, the degree of dirt and the surface to be treated



### UltraCare Acid Cleaner

Concentrated acid cleaner.

**APPLICATION:** rotary-head cleaner or abrasive pad

**CONSUMPTION:** depending on dilution, the degree of dirt and the surface to be treated



### UltraCare Kerapoxy Cleaner

Ready to use special cleaning product to remove epoxy residues.

**APPLICATION:** abrasive pad

**CONSUMPTION:** depending on dilution, the degree of dirt and the surface to be treated.



### UltraCare Keranet

Acid-based concentrated cleaning product in liquid form to remove cementitious residues from porcelain, ceramic and all acid-resistant materials. Ideal for cleaning operations after completing laying work, for removing salt and limescale efflorescence and rust stains.

**APPLICATION:** rotary-head cleaner or abrasive pad

**CONSUMPTION:** depending on dilution, the degree of dirt and the surface



### UltraCare Epoxy Off Gel

Special high-viscosity cleaner to remove epoxy residues. Thanks to its viscosity, it is ideal for application on walls.

**APPLICATION:** flat brush, roller or abrasive pad

**CONSUMPTION:** depending on the degree of dirt/residues and the surface to be treated



### UltraCare Keranet Easy

Ready to use acid spray cleaning product that also removes cementitious residues immediately after grouting. Removes surface residues of cement, lime and efflorescence. Suitable for cleaning the back side of porcelain tiles.

**APPLICATION:** Damp cellulose sponge

**CONSUMPTION:** Depending on the degree of dirt/residues and the surface to be treated



# CLEANING & MAINTENANCE SOLUTIONS



## UltraCare Multicleaner

Concentrated cleaner with a very high yield for everyday cleaning and maintenance of surfaces.

**APPLICATION:** floor cleaner

**CONSUMPTION:** depending on dilution, the degree of dirt and the surface to be treated.



## SEALER

### UltraCare Stain Protector W

Water-based, natural effect polymer emulsion with protective and stain-resistant properties for matt surfaces.

**APPLICATION:** brush, cloth or waxing mop

**CONSUMPTION:** depending on the absorbency and the surface finish of the



### UltraCare Stain Protector S

Solvent-based, natural effect blend of polymers with protective and stain-resistant properties.

**APPLICATION:** brush, cloth or waxing mop

**CONSUMPTION:** depending on the absorbency and the surface finish of the substrate to be treated.



### UltraCare Intensifier S

Solvent-based blend of polymers with high penetration capacity, for a colour enhancing and protective effect.

**APPLICATION:** brush, cloth or waxing mop

**CONSUMPTION:** depending on the absorbency and the surface finish of the substrate to be treated.



### UltraCare Intensifier W

Water-based polymeric microemulsion with high penetration capacity and protecting and enhancing effect.

**APPLICATION:** brush, cloth or waxing mop

**CONSUMPTION:** depending on the absorbency and the surface finish of the substrate to be treated.





# CLEANING & MAINTENANCE SOLUTIONS



## UltraCare Grout Protector

Water dispersion for protecting cementitious grouts and porcelain tiles

**APPLICATION:** waxing mop or a microfibre cloth

**CONSUMPTION:** depending on the absorbency and the surface finish of the substrate to be treated.



## UltraCare Stain Protector W Plus

Water-based, natural effect polymer emulsion with protective and stain-resistant properties.

**APPLICATION:** brush, cloth or waxing mop

**CONSUMPTION:** depending on the absorbency and the surface finish of the substrate to be treated.



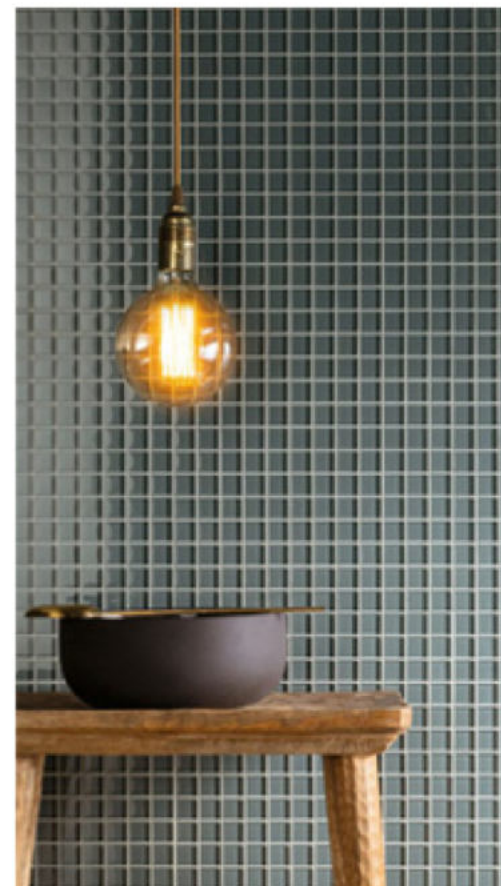
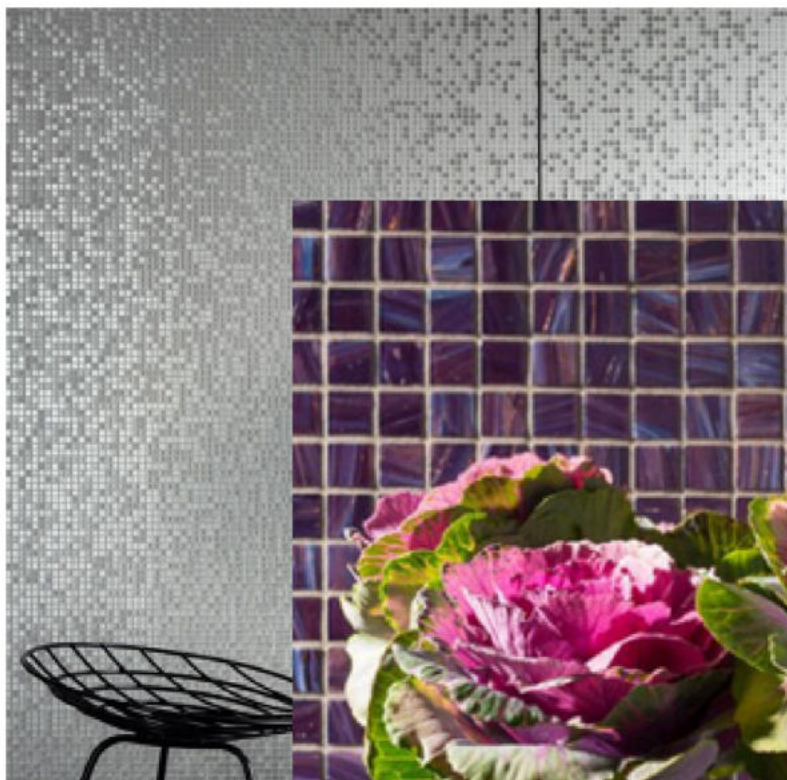
## UltraCare Grout Release

Product in water dispersion for protecting pre-grouting on pervious materials.

**APPLICATION:** waxing mop or a microfibre cloth

**CONSUMPTION:** depending on the absorbency and the surface finish of the substrate to be treated.





SHAPING MOSAICS



# M+ MOSAICS



LapizBlue

The M+ Mosaics division collects all the original history of the brand, linked to glass mosaic, in its different finishes, patterns and chromatic variations.



## Allure

Mosaic composed of square chips of float glass, cut with a diamond with a thin gold or silver film applied with an epoxy resin. The product surface can be smooth or wavy.

Thickness: 4mm

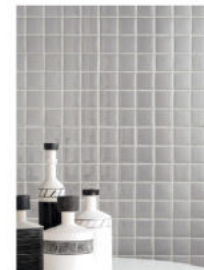
Sizes: 10x10 / 15x15 / 20x20 mm

## Area25

Mosaic made from 95% recycled sintered\* glass, comprising irregular, slightly rounded square chips

Thickness: 6mm

Sizes: 50x50 mm



## Aurore

Fused glass mosaic consisting of chips made of glass mixed with enamel granules and/or aventurina (a semiprecious gemstone)

Thickness: 4mm

Sizes: 20x20 mm

# M+ MOSAICS



LapizBlue

A new way of understanding the very concept of cladding, overcoming the limits of decoration and image to become a creative tool disposable for architects and interior designers.



## Concerto

Fused glass mosaic consisting of generally matte glaze, comprising chips.

Thickness: 4mm

Sizes: 15×15 mm

## Cromie

Cromie are formed by mixing chips of the same size in different M+ materials. The random arrangement of the colours and material characteristics of the chips give the shades great dynamism, in a game of reflections and shadows, glossy and matt surfaces.



## Sfumature

Glass mosaic comprising chips from the Colore collections (Vetrina, Concerto, Perle, Aurore, Tanticolori, Doro), mounted on fibreglass mesh.



# M+ MOSAICS



LapizBlue

## Nacre

Mosaico in natural mother of pearls.

Thickness: 1.8-2 mm

Sizes: 10×10 mm, 15×15 mm and 20×20 mm



## Divetro

Float glass mosaic comprising square chips

Thickness: 8mm

Sizes: 23×23 mm

## Doro

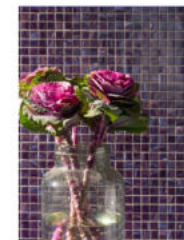
Glass and gold mosaic consisting of square chips – with a 24-carat gold foil (thin film of gold) applied, protected by a layer of glass.

Thickness: 4mm

Sizes: 10×10, 15×15 and 20×20 mm

2 finish: Smooth and Wavy.

2 colors : Yellow and White,



## Emetalloy

Mosaic consisting of a sheet of foil of AISI 316 stainless steel about 0.8 mm thick, applied to a porcelain substrate, forming sheets 8 mm thick, mounted on glass fibre mesh. Chips are available in square, rectangular, hexagonal and diamond shapes.



# M+ MOSAICS

 LapizBlue

## Onde

Fused glass mosaic consisting of generally matte glaze with an irregular square shape.

Thickness: 4 mm

Sizes: 15×15 mm



## Perle

Fused glass mosaic made of enamel with surface iridescence, comprising chips with an irregular square shape.

Thickness: 4mm

Sizes: 15×15 mm

## Tanticolori

Mosaic in fused glass with added oxide pigments, comprising bevelled square chips.

Thickness: 4mm

Sizes: 20×20 mm



## Vetrina

Float glass mosaic comprising square chips.


Thickness: 4mm

Sizes: 10×10 mm






LapizBlue



SINCE 1946







SINCE 1946



## MASTERPIUMA POWER 5

Montolit's manual tile cutter, 100% made in Italy, offers a lifetime warranty, a single scoring wheel for 5000 meters of tiles, and strength indicator for tile thickness. Effortlessly cut mosaic, ceramics, porcelain



## Montolit tools



## TABLE ONE

A modular support with an aluminum/steel composite structure that can be modeled in order to provide full support for the tiles in all configurations up to a maximum size of 240 by 150 cm

## FLASH LINE 3

Montolit FL3: the ultimate cutting tool for porcelain, stoneware tiles, and slabs. With 3 wheels (8mm, 12mm, 20mm) and a suctionless guide, it cuts tiles up to 340cm in size and 12mm in thickness. Ergonomic handle and lifetime warranty included. Transport easily in a robust fiber bag. Precision cutting made in Italy."



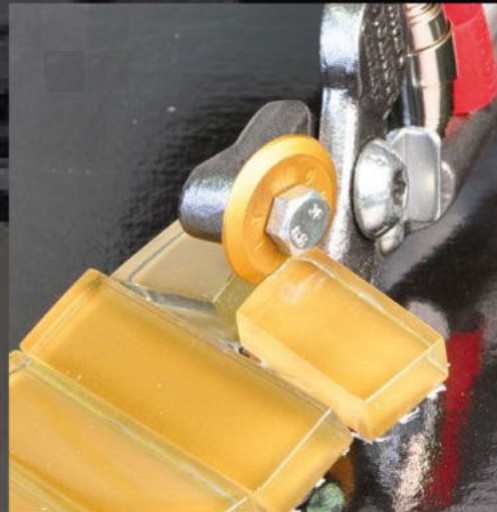




## F1 BROOKLYN ELECTRIC TILE CUTTER



Montolit's F1 Brooklyn Wet Table Saw series: 2.2 Kw motor, DNA (SCX250) diamond blade, and adaptable support for ultimate ceramic & porcelain mastery.



## TILE NIBBLER FOR GLAZED TILES AND MOSAIC

Professional tile nibbler specifically designed for glass and ceramic mosaics. This tool is extremely useful for making classic and artistic mosaics, small finishing touches for angles, special shapes

## MOTO FLASH LINE 2 SH – MOTORIZED DRY CUTTING SYSTEM

MOTO-FLASH 2 SH represents the "NO LIMITS" solution for dry cutting of ceramic, porcelain stoneware, marble and granite slabs with lengths up to over three meters (340 cm) and thicknesses up to 20 mm with a 150mm diameter blade and up to 40mm with 190mm diameter blade







SINCE 1946

## TOPROFILE



**TOPROFILE** is the new electric chamfering machine proposed by Montolit, the tile and slab profiling system for processing edges and side edges that allows you to make jolly cuts, bevels, rounded profiles on ceramic, porcelain and any stone material, easily and Safe.



## BATTLE PRO- (HAPPEN SUCTION CUP FOR TILES AND SLABS

Introducing the powerful tile vibrator with a removable, rechargeable 16V lithium battery. With three different 'beats' optimized for adhesive application and bubble extraction, and a non-marking rubber base, it guarantees efficient and precise tiling. Control it with an easy push-button panel. Get your hands on this game-changing tool today



LapizBlue

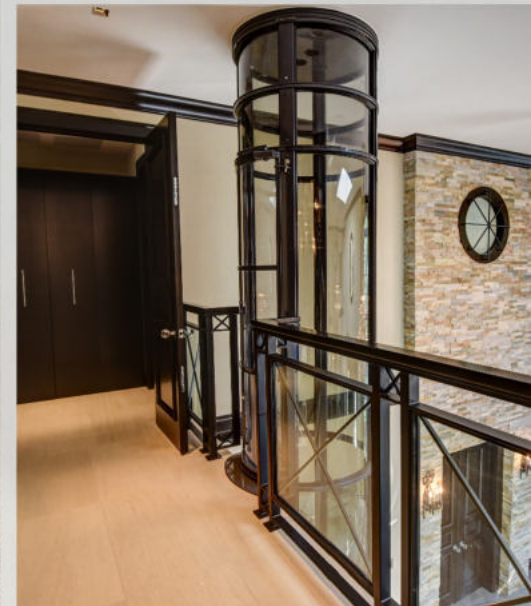
## CERMONT CPV DIAMOND BLADE



The CPV continuous rim diamond blade is the flagship product for wet cutting glass tiles, glass mosaic and large glass plates up to 3 centimeters thick. CPV is available in different diameters starting from 100mm to 350mm.



  
**pve.** **pneumatic**  
*vacuum elevator.*



# PVE

## 3 SIZES AVAILABLE

1 - 3 Passengers / Wheelchair Accessible Model

## PANORAMIC DESIGN

360° Visibility

## SPACE SAVING

No Pre-Construction Pit, Hoist Way or Machine Room Required

## FAST INSTALLATION

2 - 3 Day Installation

## PNEUMATIC TECHNOLOGY

Powered by the Most Abundant Resource in the World... AIR!



**LapizBlue**

## Pneumatic Vacuum Elevators



### 3 Models To Choose From

Are you in need of a small single passenger elevator?

Maybe a wider wheelchair accessible lift?

PVE home lifts are designed to meet all homeowner needs!



### Home Elevator PVE30

Single Passenger Residential Elevator



Exterior Diameter:  
30 Inches  
(750 millimeters)



Weight:  
350 Pounds



### Home Elevator PVE37

Two Passenger Residential Elevator



Exterior Diameter:  
37 Inches  
(933 millimeters)



Weight:  
450 Pounds



### Home Elevator PVE52

Three Passenger Residential Elevator  
Wheelchair Accessible



Exterior Diameter:  
52 - 11/16 Inches  
(1,316 millimeters)



Weight:  
525 Pounds

## HOME ELEVATORS FEATURES

### • ABSOLUTE SAFETY

Thousands of Installations in the USA and Around the Globe

### • ECO-FRIENDLY SYSTEM

No Harmful Oils or Lubricants Required

### • FACTORY CERTIFIED

Pre-Assembled & Safety Tested at our PVE Factory Headquarters

### • PLUG & PLAY ELEVATOR

220 Volt ,Single Phase Power Supply

### • MINIMAL MAINTENANCE

No Annual Maintenance Required

### • SELF-SUPPORTING ELEVATOR

Rests on Existing Ground Floor





 **Exeed Dry Mortar**



# CEMENT BASED RUSH COATS



## RUSH COAT NORMAL -RCN 800

### PRODUCT DESCRIPTION

RCN 800 is a cementitious premix rush coat based on mineral binders used for preparing concrete surfaces for external & internal plastering.

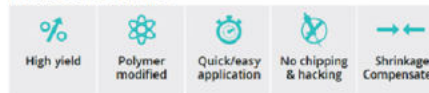
### TECHNICAL DATA

THICKNESS: 2-4 mm  
COVERAGE THICKNESS: 420 m<sup>2</sup>/ton @ 2 mm  
DENSITY: 1.56 kg/L  
WORKING TIME: 1 hr  
PACKAGING: 50 kg bags

### AREAS OF APPLICATION

Concrete blocks  
Fair faced concrete surfaces  
AAC blocks

### PRODUCT BENEFITS



## RUSH COAT SPECIAL -RCS 801

### PRODUCT DESCRIPTION

RCS 801 is a cementitious pre mix rush coat based on mineral binders specially designed for preparing dense concrete surfaces for external and internal plastering.

### TECHNICAL DATA

THICKNESS: 2-4 mm  
COVERAGE THICKNESS: 420 m<sup>2</sup>/ton @ 2 mm  
DENSITY: 1.56 kg/L  
WORKING TIME: 1 hr  
PACKAGING: 50 kg bags

### AREAS OF APPLICATION

Dense concrete surfaces containing GGBS/Micro silica/fly ash  
AAC blocks  
Concrete blocks

### PRODUCT BENEFITS



## KEY COAT POLYSTYRENE - KC-PS

### PRODUCT DESCRIPTION

KC-PS is a cementitious pre mix key coat based on mineral binders specially designed for external and internal application.

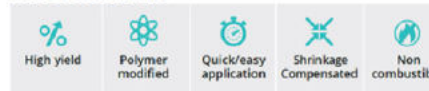
### TECHNICAL DATA

THICKNESS: 2-4 mm  
COVERAGE THICKNESS: 450 m<sup>2</sup>/ton @ 2 mm  
DENSITY: 1.4 kg/L  
WORKING TIME: 1 hr  
PACKAGING: 40 kg bags

### AREAS OF APPLICATION

Polystyrene and EPS surfaces  
AAC blocks  
Concrete surfaces  
Concrete blocks

### PRODUCT BENEFITS





# CEMENT RENDERS & PLASTERS



## INSULATION CEMENT PLASTER- MR 120

### PRODUCT DESCRIPTION

MR 120 is a light weight insulation cementitious premix plaster designed for hand & spray application, suitable for plastering external & internal masonry surfaces.

### TECHNICAL DATA

THICKNESS: 10-40 mm  
COVERAGE THICKNESS: 14.7 kg/m<sup>2</sup> or 55 m<sup>2</sup>/ton @ 15 mm  
DENSITY: 1.12 kg/L  
WORKING TIME: 1 hr  
PACKAGING: 35 kg bags

### AREAS OF APPLICATION

All concrete surfaces  
All types of block work  
Concrete blocks

### PRODUCT BENEFITS



## DRY SHOTCRETE PLASTER -DSP 350

### PRODUCT DESCRIPTION

DSP 350 is a coarse grained, fiber reinforced, high quality normal setting dry structural shotcrete mix for all kinds of concrete applications, where machine processing & fast application is required for layers of 10-60 mm thicknesses in a single coat. DSP 350 is specially formulated to warrant for uniformity of shotcrete quality, also available upon request in rapid setting & shrinkage compensated adjustments

### TECHNICAL DATA

THICKNESS: 10-60 mm  
YIELD: 620 L  
DENSITY: 1.6 kg/L  
WORKING TIME: 1 hr  
PACKAGING: 50 kg bags

### AREAS OF APPLICATION

All concrete surfaces  
All types of block work  
AAC Panel

### PRODUCT BENEFITS



## FIRE PROOF CEMENT PLASTER -FP 190

### PRODUCT DESCRIPTION

FP 190 is a cementitious premix plaster specially designed for walls and ceilings as a fire resistant & fire rated rendering for hand & machine application.

### TECHNICAL DATA

THICKNESS: 10-45 mm  
COVERAGE THICKNESS: 13 kg/m<sup>2</sup> or 60 m<sup>2</sup>/ton @ 20 mm  
DENSITY: 0.7 kg/L  
WORKING TIME: 1 hr  
PACKAGING: 30 kg bags

### AREAS OF APPLICATION

All types of block work  
All concrete surfaces  
Steel joint columns

### PRODUCT BENEFITS



# CEMENT RENDERS & PLASTERS



## RADIATION PROHIBITING CEMENT PLASTER- XPP 180

### PRODUCT DESCRIPTION

XPP 180 is a radiation prohibiting plaster specially designed for use in diagnostic x-ray units with a rated voltage of up to 250V.

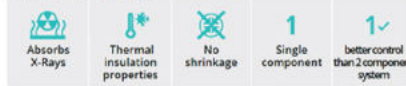
### TECHNICAL DATA

THICKNESS: 2-5 cm @ 30 kg/m<sup>2</sup>/cm  
 CONSUMPTION: 1 cm plaster thickness : approx. 30Kg/m<sup>2</sup>  
 1.5 cm plaster thickness : approx. 45Kg/m<sup>2</sup>  
 2.0 cm plaster thickness : approx. 60Kg/m<sup>2</sup>  
 2.5 cm plaster thickness : approx. 75Kg/m<sup>2</sup>  
 PACKAGING: 40 kg bags

### AREAS OF APPLICATION

hospital /dental surgeries /Laboratories

### PRODUCT BENEFITS



## CEMENT PUTTY -CP 110

### PRODUCT DESCRIPTION

CP 110 is a cementitious putty designed for hand application for a smooth, waterproof finish on aerated concrete & as a surface preparation with levelling properties for painting jobs on cementitious plaster & fiber cement boards.

### TECHNICAL DATA

THICKNESS: 0-3 mm  
 COVERAGE THICKNESS: Approx. 2.20 kg/m<sup>2</sup> or 450 m<sup>2</sup>/ton @ 2mm  
 DENSITY: 1.1 kg/L  
 WORKING TIME: 1 hr  
 PACKAGING: 35 kg bags

### PRODUCT BENEFITS





# GYPSUM PLASTERS & DRY WALL SYSTEMS



## GYPSUM PLASTER – GPM 200

### PRODUCT DESCRIPTION

GPM 200 (previously named GAAC) is a high yield gypsum plaster, made up of specially designed mineral binders & mineral light weight aggregates. GPM 200 has optimal processing properties & does not require a rush coat when it is applied to AAC blocks & other types of block work.

### PRODUCT BENEFITS



### TECHNICAL DATA

THICKNESS: 8-40 mm  
COVERAGE THICKNESS: 11.0 kg/m<sup>2</sup> or 85 m<sup>2</sup>/ton @ 13 mm  
DENSITY: 0.86 kg/L  
WORKING TIME: 2 hr  
PACKAGING: 35 kg bags /SILO

### AREAS OF APPLICATION

All types of wall and ceiling substrates  
All types of block work

## GYPSUM VENEER THINCOAT – GPV 220

### PRODUCT DESCRIPTION

GPV 220 is a thin coat plaster. The application of GPV 220 allows the surface to be highly resistant to crack formation, abrasion & scuffing. A variety of decorative products may then be used in finishing the surface.

### PRODUCT BENEFITS



### TECHNICAL DATA

THICKNESS: 4-12 mm  
COVERAGE THICKNESS: 11.0 kg/m<sup>2</sup> or 95 m<sup>2</sup>/ton @ 8 mm  
DENSITY: 0.85 kg/L  
WORKING TIME: 1 hr  
PACKAGING: 30 kg bags

### AREAS OF APPLICATION

All types of wall and ceiling substrates  
All types of block work

## GYPSUM BONDING COMPOUND – GBC 240

### PRODUCT DESCRIPTION

GBC 240 is a gypsum based bonding compound containing bonding enhancing additives & retarders specially designed for bonding gypsum plasterboards to all regular surfaces.

### PRODUCT BENEFITS



### TECHNICAL DATA

THICKNESS: 5 – 40 mm  
COVERAGE THICKNESS: 6.0 kg/m<sup>2</sup> or 167 m<sup>2</sup>/ton @ 5 mm  
DENSITY: 1.25 kg/L  
WORKING TIME: 120 min  
PACKAGING: 35 kg bags

### AREAS OF APPLICATION

AAC blocks  
Concrete blocks  
Form-work  
All concrete surfaces

# GYPSUM PLASTERS & DRY WALL SYSTEMS



## GYPSUM SKIM COAT – GSC 250

### PRODUCT DESCRIPTION

GSC 250 is a gypsum based skim coat designed for plasterboard finishing by hand application & as a finish coat for plasters & renders. GSC 250 provides a smooth white surface & acts as a base for decoration & any other final finishing.

### TECHNICAL DATA

THICKNESS: 0-3 mm  
COVERAGE THICKNESS: 2.5 kg/m<sup>2</sup> or 320 m<sup>2</sup>/ton @ 3 mm  
DENSITY: 0.86 kg/L  
WORKING TIME: 1 hr  
PACKAGING: 30 kg bags

### AREAS OF APPLICATION

Internal use only  
Precast and fair-faced concrete walls and ceilings  
AAC Blocks  
Gypsum boards  
Fiber cement boards

### PRODUCT BENEFITS



## GYPSUM POWDER – GP

### PRODUCT DESCRIPTION

GP is Beta hemihydrate gypsum (base gypsum). GP can be used as the basic component in high performing plaster based application products.

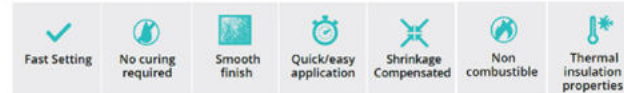
### TECHNICAL DATA

DENSITY: 0.7 kg/L  
WORKING TIME: 15 min  
PACKAGING: 30 kg bags

### AREAS OF APPLICATION

Crack filling  
Joint material  
Floor protection  
General gypsum casting & moulding

### PRODUCT BENEFITS



## ACOUSTIC PLASTER – ACP 290

### PRODUCT DESCRIPTION

ACP 290 is a gypsum based plaster based on mineral binders & mineral light weight aggregates specially designed to provide high acoustic & thermal insulation properties.

### TECHNICAL DATA

THICKNESS: 10-40 mm  
COVERAGE THICKNESS: Approx. 85 m<sup>2</sup>/ton @ 25 mm  
DENSITY: 0.6 kg/L  
WORKING TIME: 1 hr  
PACKAGING: 15 kg bags

### AREAS OF APPLICATION

All types of substrates & ceilings  
Theatres and auditoriums  
Sound recording studios

### PRODUCT BENEFITS





# GYPSUM PLASTERS & DRY WALL SYSTEMS



## PROTECTIVE GYPSUM – PG 260

### PRODUCT DESCRIPTION

PG 260 is designed to protect finished precious floor coverings as tiles, granite & marble during the construction phase from damage through regular construction traffic – smooth, fast setting protective screed.








### TECHNICAL DATA

DENSITY: 0.7 kg/L  
WORKING TIME: 15 min  
PACKAGING: 30 kg bags

### AREAS OF APPLICATION

Floor protection

### PRODUCT BENEFITS

						
Fast Setting	No curing required	Smooth finish	Quick/easy application	Shrinkage Compensated	Non combustible	Thermal insulation properties

# DECORATIVE RENDERS

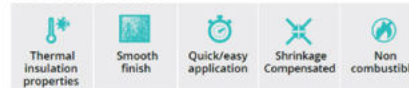


## COLOUR PLASTER (MULTI-COLOR) -MRC 700

### PRODUCT DESCRIPTION

MRC 700 is a pigmented colour plaster based on mineral binders & mineral light weight aggregates designed for hand & spray application. MRC 700 can also be used as an artificial rock- render. The product is available in 16 standard colours and EPDM can also tailor-make colours to meet customer's specific requirements.

### PRODUCT BENEFITS



### TECHNICAL DATA

THICKNESS: 10-40 mm  
COVERAGE THICKNESS: Approx. 58 m2/ton @ 12mm  
DENSITY: 1.2 kg/L  
WORKING TIME: 1 hr  
PACKAGING: 35 kg bags /SILO

### AREAS OF APPLICATION

All concrete surfaces  
All types of block work

## TEXTURE FINISH COLOUR PLASTER -TFC 750

### PRODUCT DESCRIPTION

TFC 750 is a single component polymer modified top coat based on mineral binders, suitable for internal & external application. TFC 750 is available in natural white & 16 additional colours.

### PRODUCT BENEFITS



### TECHNICAL DATA

THICKNESS: up to 4 mm  
COVERAGE THICKNESS: 4.5 kg/m2 @ 3 mm  
DENSITY: 1.2 kg/L  
WORKING TIME: 1 hr  
PACKAGING: 50 kg bags

### AREAS OF APPLICATION

Composite thermal insulation systems  
Facades  
Facades with high moisture stress  
Interior walls and ceilings  
All concrete surfaces  
All mineral surfaces

## HERITAGE PLASTER -TFC 751

### PRODUCT DESCRIPTION

TFC 751 is a single component Polymer modified heritage plaster on mineral binders, suitable for internal & external application. TFC 751 is available in natural white & 16 additional colours. TFC 751 offers undulated finishes.

### PRODUCT BENEFITS



### TECHNICAL DATA

THICKNESS: up to 4 mm  
COVERAGE THICKNESS: 4.5 kg/m2 @ 3 mm  
DENSITY: 1.2 kg/L  
WORKING TIME: 1 hr  
PACKAGING: 25/50 kg bags

### AREAS OF APPLICATION

Composite thermal insulation systems  
Facades  
Facades with high moisture stress  
Interior walls and ceilings  
All concrete surfaces  
All mineral surfaces



# DECORATIVE RENDERS



## GLITTERING & MARBLE FINISH -GMC 790

### PRODUCT DESCRIPTION

TFC 751 is a single component Polymer modified heritage plaster on mineral binders, suitable for internal & external application. TFC 751 is available in natural white & 16 additional colours. TFC 751 offers undulated finishes.

### PRODUCT BENEFITS



### TECHNICAL DATA

THICKNESS: 5-8 mm  
COVERAGE THICKNESS: 9.25 kg/m<sup>2</sup> or 3.7m<sup>2</sup>/bag, 1.85 kg/m<sup>2</sup>/mm @ 5 mm  
DENSITY: 1.68 kg/L  
WORKING TIME: 1 hr  
PACKAGING: 35 kg bags

### AREAS OF APPLICATION

Internal use only  
Precast and fair-faced concrete walls and ceilings  
AAC Blocks  
Gypsum boards  
Fiber cement boards

## COLOUR PUTTY -CPC 710

### PRODUCT DESCRIPTION

CPC 710 is a cementitious putty designed for hand application for a smooth, waterproof finish on aerated concrete & as a surface preparation with levelling properties for painting jobs on cementitious plaster & fiber cement boards. CPC 710 provides a smoother & stronger adhesion resulting in minimizing paint costs & extending the overall durability

### PRODUCT BENEFITS



### TECHNICAL DATA

THICKNESS: 0-3 mm  
COVERAGE THICKNESS: Approx. 2.20 kg/m<sup>2</sup> or 450 m<sup>2</sup>/ton @ 2 mm  
DENSITY: 1.1 kg/L  
WORKING TIME: 1 hr  
PACKAGING: 35 kg bags

## COLOUR WASH -SSC 701

### PRODUCT DESCRIPTION

SSC 701 is a liquid colour wash that will ensure colour matching/consistency of colour plasters & colour coats on occasions where colour has been compromised after application.

### PRODUCT BENEFITS



### TECHNICAL DATA

CONSUMPTION: 0.1-0.5 kg/m<sup>2</sup> (According to the absorption and porosity of the surface)  
DRY SOLID CONTENT: 25 %  
PACKAGING: 10 L

### AREAS OF APPLICATION

Coloured plasters

# DECORATIVE RENDERS



## ROCK RENDERS COLOUR -RRC 777

### PRODUCT DESCRIPTION

RRC 777 is a special adhesive Rock Renders Colour designed for hand & spray application on all the substrates & for moulding to realize all kinds of artificial rock- & stone project finishes.

### TECHNICAL DATA

THICKNESS: 8-40 mm  
COVERAGE THICKNESS: @ 10mm thickness 3.5 m<sup>2</sup> /50 kg bags; yield -35 L  
DENSITY: 1.56 kg/L  
WORKING TIME: 1 hr  
PACKAGING: 50 kg bags/ SILO

### AREAS OF APPLICATION

All types of block work (AAC and Conventional concrete)  
All concrete surfaces  
AAC Panels

### PRODUCT BENEFITS

 High yield	 Polymer modified	 Smooth & Textured finish	 Shrinkage Compensated	 Non combustible	 Thermal insulation properties	 High abrasion & impact resistance
---	---	---	--	--	--	--





 **Exeed  
Litecrete**

# EXEED LITECRETE AAC



LapizBlue

## EXEED LITECRETE AAC SOLUTIONS

Exeed Litecrete AAC is available in a wide range of dimensions, density and strength classes.



AAC BLOCK - E0

Autoclaved Aerated Concrete Blocks with a density of  $430 \pm 30 \text{ kg/m}^3$ , compressive strength of minimum  $3.2 \text{ N/mm}^2$ , and thermal conductivity of  $0.110.12 \text{ W/mK}$ .



AAC BLOCK - E2

Autoclaved Aerated Concrete Blocks with a density of  $500 \pm 20 \text{ kg/m}^3$ , compressive strength of minimum  $3.2 \text{ N/mm}^2$ , and thermal conductivity of  $0.135 \text{ W/mK}$ .



AAC BLOCK - E3

Autoclaved Aerated Concrete Blocks with a density of  $600 \pm 20 \text{ kg/m}^3$ , compressive strength of minimum  $5 \text{ N/mm}^2$ , and thermal conductivity of  $0.14 \text{ W/mK}$ .



AAC Block - E4

Autoclaved Aerated Concrete Blocks with a density of  $650 \text{ kg/m}^3$ , compressive strength of minimum  $5.5 \text{ N/mm}^2$ , and thermal conductivity of  $0.16 - 0.17 \text{ W/mK}$ .



AAC BLOCK MORTAR

We can provide you a complete AAC system including our superior quality AAC block mortar & plastering materials.





# **LAPIZ BLUE GENERAL TRADING LLC**

[WWW.LAPIZBLUE.COM](http://WWW.LAPIZBLUE.COM)

[info@lapizblue.com](mailto:info@lapizblue.com)

**DUBAI : SHOP 12, AL QUOZ  
INDUSTRIAL AREA 4**

**+971 4 885 5257**

**ABU DHABI : SHOP 2, M 40  
MUSAFFAH**

**+971 2 886 7753**



@LAPIZBLUE.DXB